

Extra Heavy Duty Steel Lintel

TX170/125

Wall Construction

Inner Leaf

Outer Leaf

Cavity

Loading Details

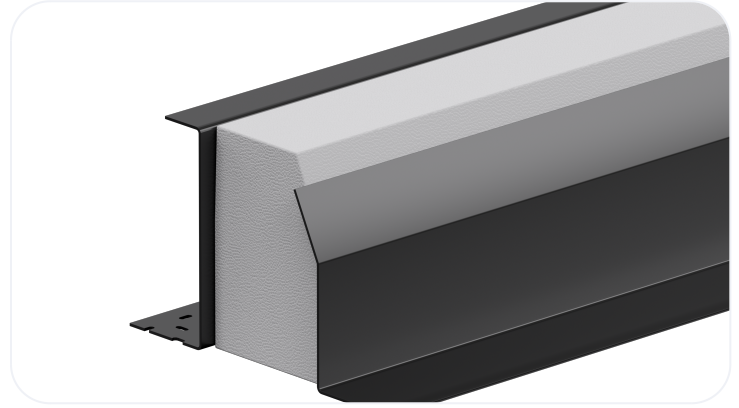
CAVITY WALL

125-140

100-102

170-185

EXTRA HEAVY



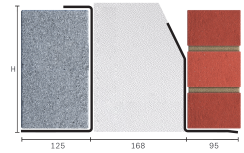
Specification

Product Code	Standard Length (mm)	SWL (kN) 1:1/19:1	Weight (kg)	Nominal Height (mm)
TX170/1250750	750	60	13.36	229
TX170/1250900	900	60	16.03	229
TX170/1251050	1050	60	18.70	229
TX170/1251200	1200	60	21.37	229
TX170/1251350	1350	60	24.04	229
TX170/1251500	1500	60	26.72	229
TX170/1251650	1650	60	29.39	229
TX170/1251800	1800	60	32.06	229
TX170/1251950	1950	60	34.73	229
TX170/1252100	2100	60	37.40	229
TX170/1252250	2250	60	51.59	229
TX170/1252400	2400	60	55.03	229
TX170/1252550	2550	60	58.47	229
TX170/1252700	2700	60	61.91	229
TX170/1252850	2850	55	65.35	229
TX170/1253000	3000	55	68.79	229
TX170/1253300	3300	50	75.67	229
TX170/1253600	3600	50	82.55	229
TX170/1253900	3900	50	89.43	229
TX170/1254200	4200	32	96.31	229
TX170/1254575	4575	32	104.90	229
TX170/1254800	4800	32	110.06	229

- The SWL (safe working load) is based on the total UDL (uniform distributed load) over maximum span using 150mm end bearings.
- Standard lengths are available in increments of 150mm at lengths up to 3000mm, 300mm at lengths from 3000mm - 4800mm (including 4575 but excluding 4500mm).
- Separate DPC tray required
- When using the Catnic TH and TX Open Back ranges with concrete floors, always ensure that the blockwork is built tight against the inner vertical face, and that a mortar joint is added to the top of the blockwork so that the floor units have an even spread over the inner flange

of the lintel.

- Achieving a remarkably low Psi value ensures this Catnic lintel will always meet the performance criteria requirements of Appendix Q found in SAP 2012 providing easy compliance with Part L of the Building Regulations



All ratios are shown inner to outer

Note: Whilst the above information is intended to offer general guidance regarding typical applications, it should not be considered as comprehensive. Requirements not fully covered by the above should be referred to our technical services department for individual consideration.

Catnic

Pontypanddy Industrial Estate Caerphilly CF83 3GL United Kingdom

+44 (0)29 2033 7900 | catnic.technical@tatasteeleurope.com

www.catnic.com

Care has been taken to ensure that the contents of this publication are accurate, but Tata Steel Europe Limited and its subsidiaries, which includes Tata Steel UK Limited, do not accept responsibility or liability for errors or information that is found to be misleading. Before using products or services supplied or manufactured by Tata Steel Europe Limited and its subsidiaries, customers should satisfy themselves as to their suitability.

© Copyright 2024 Tata Steel UK Limited.