

Standard Duty Steel Lintel

TS130/125

Wall Construction

Inner Leaf

Outer Leaf

Cavity

Loading Details

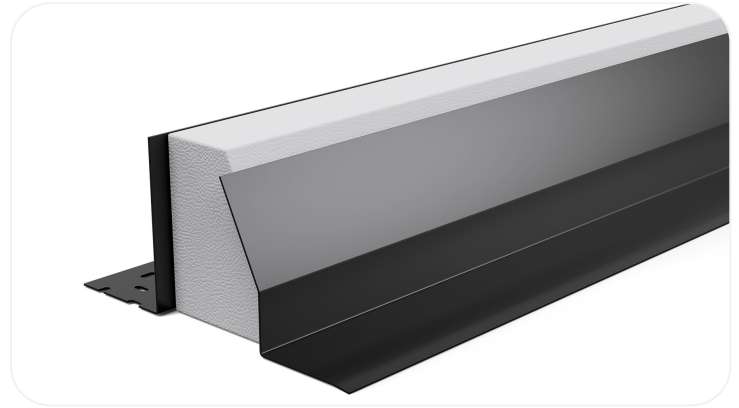
CAVITY WALL

125-140

100-102

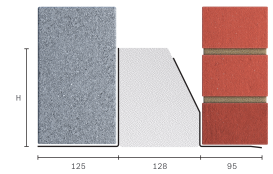
130-145

STANDARD



Specification

Product Code	Standard Length (mm)	SWL (kN) 1:1/3:1	Weight (kg)	Nominal Height (mm)
TS130/1250750	750	12	6.38	153
TS130/1250900	900	12	7.66	153
TS130/1251050	1050	12	8.94	153
TS130/1251200	1200	12	10.21	153
TS130/1251350	1350	17	16.81	198
TS130/1251500	1500	17	18.68	198
TS130/1251650	1650	17	20.54	198
TS130/1251800	1800	17	22.41	198
TS130/1251950	1950	20	32.47	236
TS130/1252100	2100	20	34.97	236
TS130/1252250	2250	20	37.46	236
TS130/1252400	2400	20	39.96	236
TS130/1252550	2550	26	44.68	229
TS130/1252700	2700	26	47.30	229
TS130/1252850	2850	26	49.93	229
TS130/1253000	3000	26	52.56	229



All ratios are shown inner to outer

- The SWL (safe working load) is based on the total UDL (uniform distributed load) over maximum span using 150mm end bearings.
- Standard lengths are available in increments of 150mm at lengths up to 3000mm.
- Separate DPC tray required
- Achieving a remarkably low Psi value ensures this Catnic lintel will always meet the performance criteria requirements of Appendix Q found in SAP 2012 providing easy compliance with Part L of the Building Regulations

Note: Whilst the above information is intended to offer general guidance regarding typical applications, it should not be considered as comprehensive. Requirements not fully covered by the above should be referred to our technical services department for individual consideration.

Catnic

Pontypandy Industrial Estate Caerphilly CF83 3GL United Kingdom

+44 (0)29 2033 7900 | catnic.technical@tatasteeleurope.com

www.catnic.com

Care has been taken to ensure that the contents of this publication are accurate, but Tata Steel Europe Limited and its subsidiaries, which includes Tata Steel UK Limited, do not accept responsibility or liability for errors or information that is found to be misleading. Before using products or services supplied or manufactured by Tata Steel Europe Limited and its subsidiaries, customers should satisfy themselves as to their suitability.

© Copyright 2024 Tata Steel UK Limited.