

Heavy Duty Steel Lintel

TH130/125

Wall Construction

Inner Leaf

Outer Leaf

Cavity

Loading Details

CAVITY WALL

125-140

100-102

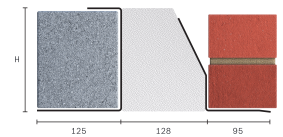
130-145

HEAVY



Specification

Product Code	Standard Length (mm)	SWL (kN) 1:1/19:1	Weight (kg)	Nominal Height (mm)
TH130/1250750	750	32	10.68	154
TH130/1250900	900	32	12.82	154
TH130/1251050	1050	32	14.95	154
TH130/1251200	1200	32	17.09	154
TH130/1251350	1350	32	19.22	154
TH130/1251500	1500	32	21.36	154
TH130/1251650	1650	32	23.50	154
TH130/1251800	1800	32	25.63	154
TH130/1251950	1950	48	34.16	229
TH130/1252100	2100	48	36.79	229
TH130/1252250	2250	45	39.42	229
TH130/1252400	2400	45	42.05	229



All ratios are shown inner to outer

- The SWL (safe working load) is based on the total UDL (uniform distributed load) over maximum span using 150mm end bearings.
- Standard lengths are available in 150mm increments up to 2400mm.
- Separate DPC tray required
- When using the Catnic TH and TX Open Back ranges with concrete floors, always ensure that the blockwork is built tight against the inner vertical face, and that a mortar joint is added to the top of the blockwork so that the floor units have an even spread over the inner flange of the lintel.
- Achieving a remarkably low Psi value ensures this Catnic lintel will always meet the performance criteria requirements of Appendix Q found in SAP 2012 providing easy compliance with Part L of the Building Regulations

Note: Whilst the above information is intended to offer general guidance regarding typical applications, it should not be considered as comprehensive. Requirements not fully covered by the above should be referred to our technical services department for individual consideration.

Catnic

Pontypandy Industrial Estate Caerphilly CF83 3GL United Kingdom

+44 (0)29 2033 7900 | catnic.technical@tatasteeleurope.com

www.catnic.com

Care has been taken to ensure that the contents of this publication are accurate, but Tata Steel Europe Limited and its subsidiaries, which includes Tata Steel UK Limited, do not accept responsibility or liability for errors or information that is found to be misleading. Before using products or services supplied or manufactured by Tata Steel Europe Limited and its subsidiaries, customers should satisfy themselves as to their suitability.