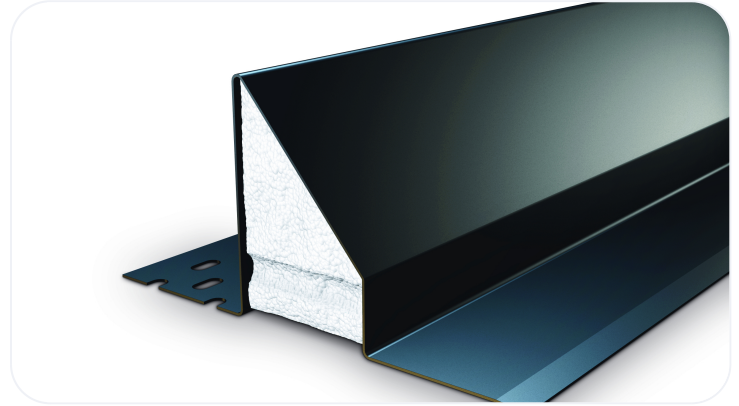


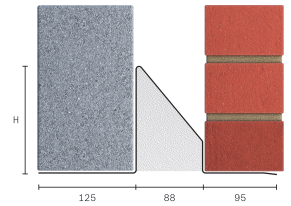
Standard Duty Steel Lintel CG90/125

Wall Construction	CAVITY WALL
Inner Leaf	125-140
Outer Leaf	100-102
Cavity	90-105
Loading Details	STANDARD



Specification

Product Code	Standard Length (mm)	SWL (kN) 1:1/3:1	Weight (kg)	Nominal Height (mm)
CG90/1250900	900	12	7.63	137
CG90/1251200	1200	12	10.22	137
CG90/1251500	1500	17	12.06	137
CG90/1251800	1800	17	15.04	137
CG90/1252100	2100	20	20.23	188
CG90/1252400	2400	20	23.03	188
CG90/1252700	2700	26	36.43	220
CG90/1253000	3000	26	40.41	220



All ratios are shown inner to outer

- The SWL (safe working load) is based on the total UDL (uniform distributed load) over maximum span using 150mm end bearings.
- Standard lengths are available in increments of 300mm at lengths up to 3000mm.

Note: Whilst the above information is intended to offer general guidance regarding typical applications, it should not be considered as comprehensive. Requirements not fully covered by the above should be referred to our technical services department for individual consideration.

Catnic

Pontypany Industrial Estate Caerphilly CF83 3GL United Kingdom
 +44 (0)29 2033 7900 | catnic.technical@tatasteeleurope.com
www.catnic.com

Care has been taken to ensure that the contents of this publication are accurate, but Tata Steel Europe Limited and its subsidiaries, which includes Tata Steel UK Limited, do not accept responsibility or liability for errors or information that is found to be misleading. Before using products or services supplied or manufactured by Tata Steel Europe Limited and its subsidiaries, customers should satisfy themselves as to their suitability.

© Copyright 2024 Tata Steel UK Limited.