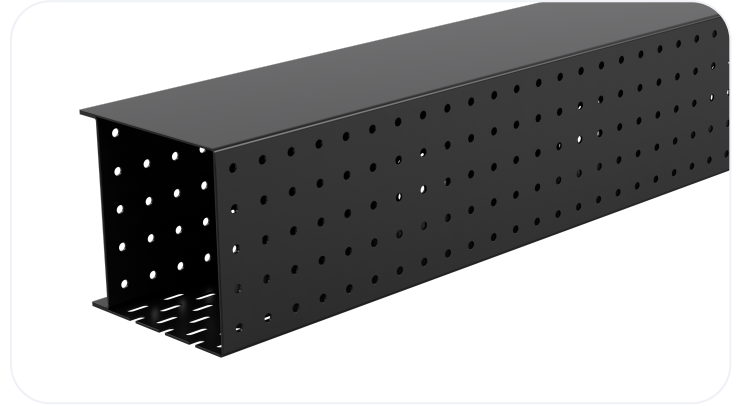


Standard Duty Steel Lintel

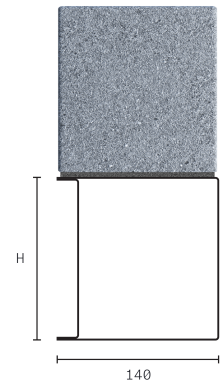
BSD140

| | |
|-------------------|---------------|
| Wall Construction | INTERNAL WALL |
| Inner Leaf | 140 |
| Outer Leaf | N/A |
| Cavity | N/A |
| Loading Details | STANDARD |



Specification

| Product Code | Standard Length (mm) | SWL (kN) | Weight (kg) | Nominal Height (mm) |
|--------------|----------------------|----------|-------------|---------------------|
| BSD1401050 | 1050 | 19 | 7.29 | 143 |
| BSD1401200 | 1200 | 19 | 8.33 | 143 |
| BSD1401350 | 1350 | 19 | 9.37 | 143 |
| BSD1401500 | 1500 | 19 | 10.41 | 143 |
| BSD1401650 | 1650 | 19 | 11.45 | 143 |
| BSD1401800 | 1800 | 19 | 12.49 | 143 |
| BSD1401950 | 1950 | 19 | 13.53 | 143 |
| BSD1402100 | 2100 | 19 | 14.57 | 143 |
| BSD1402250 | 2250 | 20 | 19.53 | 143 |
| BSD1402400 | 2400 | 20 | 20.83 | 143 |
| BSD1402550 | 2550 | 20 | 22.13 | 143 |
| BSD1402700 | 2700 | 20 | 23.44 | 143 |
| BSD1402850 | 2850 | 29 | 37.19 | 219 |
| BSD1403000 | 3000 | 29 | 39.15 | 219 |
| BSD1403300 | 3300 | 29 | 43.07 | 219 |
| BSD1403600 | 3600 | 29 | 46.98 | 219 |
| BSD1403900 | 3900 | 29 | 66.73 | 219 |
| BSD1404200 | 4200 | 29 | 71.86 | 219 |
| BSD1404575 | 4575 | 29 | 78.28 | 219 |
| BSD1404800 | 4800 | 27 | 82.13 | 219 |



All ratios are shown inner to outer

- The SWL (safe working load) is based on the total UDL (uniform distributed load) over maximum span using 150mm end bearings.
- Standard lengths are available in increments of 150mm at lengths up to 3000mm, 300mm at lengths from 3000mm to 4800mm (including 4575mm, but excluding 4500mm).

Note: Whilst the above information is intended to offer general guidance regarding typical applications, it should not be considered as comprehensive. Requirements not fully covered by the above should be referred to our technical services department for individual consideration.

Catnic

Pontypandy Industrial Estate Caerphilly CF83 3GL United Kingdom

+44 (0)29 2033 7900 | catnic.technical@tatasteeleurope.com

www.catnic.com

Care has been taken to ensure that the contents of this publication are accurate, but Tata Steel Europe Limited and its subsidiaries, which includes Tata Steel UK Limited, do not accept responsibility or liability for errors or information that is found to be misleading. Before using products or services supplied or manufactured by Tata Steel Europe Limited and its subsidiaries, customers should satisfy themselves as to their suitability.

© Copyright 2024 Tata Steel UK Limited.