

Catnic Urban Specification Guide

Catnic — A Tata Steel Enterprise



Contents

Introduction	3 - 4
Roofing — Urban Roof	5 - 7
SolarSeam®	8
Cladding — Urban Wall	9
Urban Seam® Façade	10
Roof Construction	11
Materials	12 - 13
Guarantees	14
Credentials	15
Technical Drawings	
Vented Roof	16 - 23
Vertical Wall	24 - 27

Introducing Catnic Urban

Catnic Urban is an innovative, light-weight and versatile standing seam roofing and wall cladding system.

Overview

Boasting strong sustainability credentials and BBA certification, Catnic Urban offers a contemporary finish, without compromising on durability or environmental responsibility.

Table 1 shows the available profile widths, weight per sqm and available lengths.

Table 1			
PROFILE WIDTH (mm)	WEIGHT PER m ² (kgs)	SHORTEST LENGTH (m)	LONGEST LENGTH (m)
514	6.7	2	12.5
305	7.5	2	12.5
390	7.1	2	12.5

Application

514mm width profile

The 514mm profile is our standard profile width. This profile is used on the majority of roofing projects and is the most cost effective of the available widths. The 514mm profile can also be used for cladding.

The 514mm profile, at times, is not appropriate for high wind areas. This can be determined by a structural engineer completing a wind load calculation (see page 4 for more information on wind loading).

The 514mm profile can also be used in conjunction with Catnic SolarSeam. Leaving a gap of 78mm each side, between the solar laminate and the profile seam.

305mm width profile

The 305mm profile is recommended in areas of high wind to prevent the possibility of panel drumming caused by wind uplift. The requirement for a 305mm profile is dependent on location, storey height and roof pitch. More details on wind loading can be found on page 5.

The 305mm profile is recommended for cladding. The narrower profile reduces the potential for oil canning, helping to maintain a sleek finish. This is only an aesthetic preference and does not impact the performance or integrity of the product.

390mm width profile

The 390mm profile is only available for Catnic SolarSeam projects and is coated in Colorcoat Prisma®. This profile width offers an aesthetically pleasing finish, leaving a small gap of just 16mm each side between the solar laminate and the profile seam.



Introducing Catnic Urban

Advantages



Uncompromised aesthetic, modern curb appeal

Providing a beautiful finish to both old and modern properties with its clean lines and striking colour palette.



Quick fit installation

Catnic Urban is a quick to fit system that provides a modern alternative to traditional slate, concrete or clay tile installations.



7x lighter than traditional roof tiles

Offering customers, the option to explore unique building designs, with simple and unobtrusive detailing, designed to scale, and complement the building's size.



Suitable for roof pitches down to 5 degrees

Catnic Urban can also be used for lean to roofs or dormers, making it ideal for extensions to existing buildings as well as for lower height sections of new build properties.



Solar ready

Available with Catnic SolarSeam, a bonded solar panel integration or supplied with clips for traditional crystalline solar panels.



BBA Approved & UKCA Marked

The strength and stability, weathertightness, condensation risk, fire performance and durability of Catnic Urban have been approved by the BBA when used for both roof and wall cladding applications.



BRE A+ rated

Catnic Urban is made from pre-finished steel, which is rated A+ under BRE certification, meaning it has the lowest overall environmental impact.



Made in UK

Fully made in the UK with BES 6001 Responsible Sourcing certification, achieving maximum credits within BREEAM / LEED.



25-year Confidex® Home Guarantee

Offered free of charge directly to the homeowner, for homes in the UK and Ireland.

Roofing Urban Roof

Catnic Urban roofing provides a cost effective alternative to traditional materials such as zinc and copper, with a wide range of colours that can mimic their appearance.

Wind loading

For all buildings between 1 – 8 stories, at a pitch of 5° to 45° please refer to the following specification.

Wind loadings on a roof are dependent on:

- Building location
- Building height and number of storeys
- Roof pitch
- Topography

Catnic Urban has been designed to withstand wind loadings across the UK as calculated in accordance with BS 6339-2, BS5534 & and BS EN 1991-1-4 Section 7.2.5.

Specification of the 514mm, 305mm and 390mm width profile is dependent on the factors listed above. A structural engineer should complete a wind uplift calculation for your specific area before making any final decision.

The table below is for guidance only:

Table 2					
ROOF PITCH (DEGREES) & WALL	NO. OF STOREYS	WIND SPEED VS (M/S)	PANEL WIDTH (MM)		
			305	390	514
5 to 9	<3	≥25	✓	✓	✗
	4 to 8		✓	✓	✗
	<3	<25	✓	✓	✓
	4 to 8		✓	✓	✗
≥10	<3	≥25	✓	✓	✓
	4 to 8		✓	✓	✗
	<3	<25	✓	✓	✓
	4 to 8		✓	✓	✓



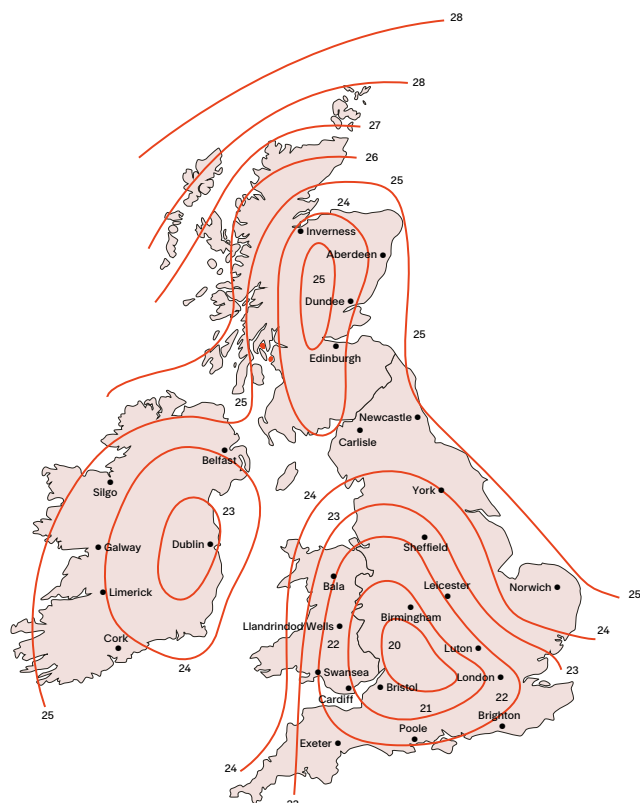
Specify Urban with the NBS

Scan the QR code to specify

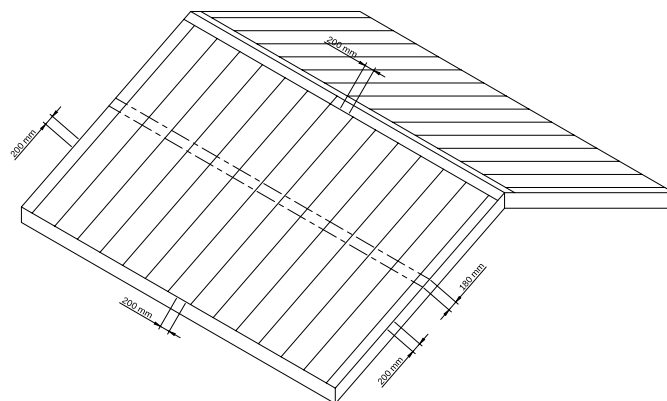


Roofing

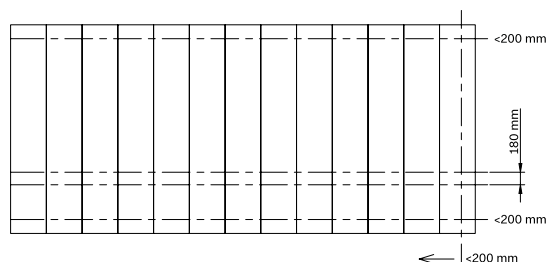
Urban Roof



Roof



Wall



When building over 3 stories or in exposed locations the structural engineer should complete a wind uplift calculation and provide Catnic Urban with the details so the best fixing solution can be developed.

Please follow our recommendations for fixing the Catnic Urban profile as described.

Fixings along the eaves, verge and mono ridge backing plates require fitting at 200mm fixing centres. The same principle applies to wall fabrications.

Fixings into the profile nailing strip must be at 180mm centres for roof and wall.

For detailed nailing patterns please refer to the 'Installation of Catnic Urban roof profile' section in the installation guide.

Urban seam profile is fixed to min 15mm or 18mm OSB3 board. A 15mm board is used for SIP panels. For other board types or dimensions please contact our technical advice line on urban.technical@tatasteel.eu

Roofing

Urban Roof

Fire

Protection from fire, and fire performance of the building envelope fabric, plays an important role in its design and construction. Fire performance of pre-finished steel is measured against two key factors:

1. **Reaction to fire**
2. **Resistance to fire**

Approved Document B sets out several key provisions for fire safety in England and Wales. Catnic Urban meets Class 0 'low risk' fire classification requirements of the UK Building Regulations and when used as part of a roof cladding system, has a B roof (t4) performance rating according to BS EN 13501-5 and meets all UK roofing application requirements.

Acoustics

Standing seam roofs, when designed and installed correctly, offer the same acoustic performance as any other traditional roof. Direct fixing of the standing seam to a boarded structure with a membrane reduces the ability for the profile to vibrate.

Different layers within the build-up provide effective sound reduction over a range of frequencies:

- Dense OSB board
- Layers of insulation
- Dense plasterboard on the inside, further reduces sound transmissions

The substrate and build up eliminates noise from rain, hail and wind. In very high wind areas, such as coastal properties, drumming can occur. To minimise this occurrence we advise using a 305mm profile.



Catnic SolarSeam[®]

Combining our standing seam roofing with bonded solar laminates, Catnic SolarSeam is able to offer an efficient solar solution that performs in low level light conditions.

It's low profiled finish allows home owners to reap the rewards of solar energy, without sacrificing the overall aesthetic of their home.

Advantages



Uncompromised aesthetic, seamlessly bonded solution

Providing a beautiful finish to both old and modern properties with solar technology seamlessly blended into roof, no visible panels, or fixings.



Lightweight, flexible & robust

Lightweight solar roof offering savings on carbon footprint, materials, installation, and maintenance in comparison with standard crystalline panels. No need for south facing installations or additional wind load calculations as there is no frame, the laminate is bonded directly to the roof panel profile.



Low maintenance, self-cleaning

Energy loss from debris on the panels is minimised as solar modules have a textured self-cleaning top layer, providing hassle free maintenance and minimizing glare to enhance light capture and energy performance.



Plug & play solution

Supplied as a complete kit of parts for your solar and roof, only a certified MCS contractor is required post fit to connect the system.



Low level light performance

High shade tolerance through multiple bypass diode design, resulting in better low level light performance. Captures light even outside times of peak sun, meaning longer periods of energy generation.



Fire rated, certified highest rating B ROOF (t4)

Catnic Urban standing seam roof with an OSB base and BiPVco solar modules has been tested in accordance with CEN/TS 1187-4 and classified as: B ROOF(t4) for external fire performance of roofs & roof coverings, this is the highest rating possible, with no penetration of the roof system within 60 minutes.



MCS certified

MCS certified CIGS laminate with 135W/m2 output, all modules are electrically tested before and after being laminated to the Catnic Urban metal roof substrate.



Multiple guarantees; Roof, solar, energy performance

25-year Confidex[®] Home Guarantee applies to the Catnic Urban roof substrate. Offered free of charge directly to the homeowner, for homes in the UK and Ireland. 10-year solar product guarantee, 25-year solar performance guarantee, provided by BiPVco, (First 20 years – 90% minimum output rating & 20-25 years - 80% minimum output).



Single installation, no secondary fixings

Solar laminates are pre bonded to the Urban profiles, providing long term durability, removing the need for frames and fixings.



Manufactured in the UK

Catnic Urban profiles and solar laminates are manufactured in the UK, supporting our local economy.



Specify SolarSeam[®] with the NBS

Scan the QR code to specify



Cladding Urban Cladding

Catnic Urban cladding is a decorative coated steel panel that can be used on residential buildings under 11m in height.

Application

Catnic Urban cladding follows the same installation process as the Urban roof. Profiles can be installed vertically or horizontally depending on desired finish and is suitable on buildings under 11m in height.

For buildings over 11m in height please refer to our Urban Seam Façade section on page 10.

The cladding panels benefit from a wide range of colour options, ranging from Anthracite grey to Seren copper. A colour card and samples are available on request.

Catnic Urban Cladding can be colour matched to the roof and is available with colour matched roofline products, including parapet capping and wall cill flashings to ensure an aesthetically pleasing finish.

Fire

Catnic Urban cladding has been tested for reaction to fire by the BBA, in material HPS200 Ultra®, achieving Class C-s2, d0 in all colours (certification number: 09/4698).

Advantages



Uncompromised aesthetic, modern curb appeal

Providing a beautiful finish to both old and modern properties with its clean lines and striking colour palette.



Quick fit installation

Catnic Urban is a quick to fit system that provides a modern alternative to traditional slate, concrete or clay tile installations.



Design flexibility

When installed as cladding, Catnic Urban profiles can be laid horizontally or vertically so suit variety of design requirements.



Low maintenance

Pre-finished steel requires little maintenance when compared with more traditional cladding material, ensuring a more cost-effective long-term solution.



BBA & UKCA certified

The strength and stability, weathertightness, condensation risk, fire performance and durability of Catnic Urban have been approved by the BBA when used for both roof and wall cladding applications.



BRE A+ rated

Catnic Urban is made from pre-finished steel, which is rated A+ under BRE certification, meaning it has the lowest overall environmental impact.



Made in UK

Fully made in the UK with BES 6001 Responsible Sourcing certification, achieving maximum credits within BREEAM / LEED.



25-year Confidex® Home Guarantee

Offered free of charge directly to the homeowner, for homes in the UK and Ireland.



Specify Urban Cladding with the NBS

Scan the QR code to specify



Urban Seam Façade

Urban Seam Façade is an A1 rated limited combustibility cladding system that is suitable for use on buildings over 11m in height.

Catnic Urban Seam Façade is fully BBA certified (certification number: 09/4698) and can be used as a protective and decorative façade over external walls of new or existing residential buildings above the damp proof course.

In the Urban Seam® Façade system the combustible backing board has been replaced by a non-combustible profiled steel deck. The profiled steel deck is fixed back to a helping hand rail and bracket system which in turn is fixed back to a typical steel frame system. All insulation, sheathing boards and plasterboard used must also be classified as A1 or A2-s1, d0.

The system, manufactured from Colorcoat® Prisma prefinished steel has been independently verified with full scale CWCT testing for wind resistance, water tightness and hard & soft body impacts, and is British Board of Agrément Approved.



Specification guide

Scan the QR code to download our specification guide for more information.



Specify Urban Seam Façade

Scan the QR code to specify



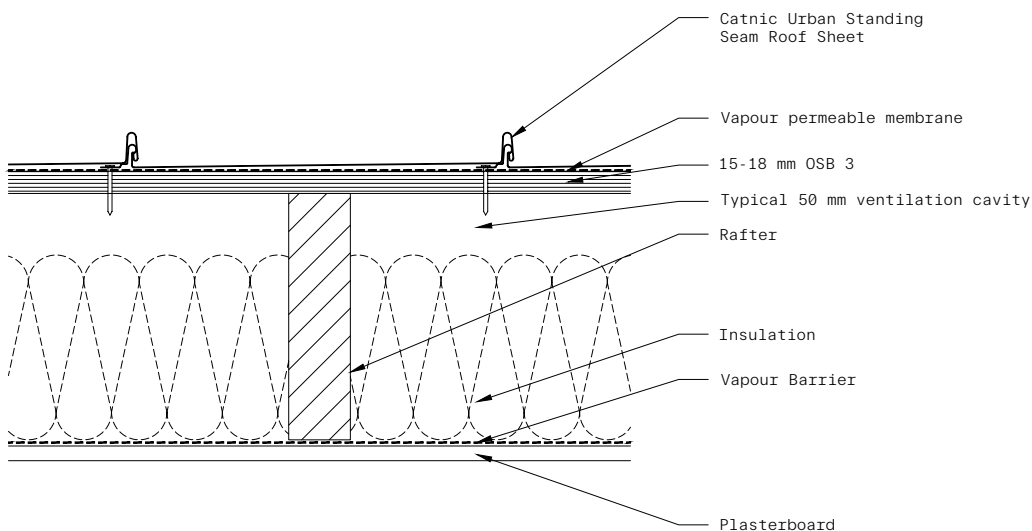
Roof Construction

Typical roof build ups are shown below, Catnic Urban roof panels must be fully supported by a continuous layer of 18mm OSB/3.

All designs should be in line with the latest edition of the Federation of Traditional Metal Roofing Contractors (FTMRC) UK Guide to Good Practice in Fully Supported Metal Roofing and Cladding.

A vented roof build up has proven to be the most functional in regards to moisture control and can be constructed as shown below or with variations.

During the design stage, it is essential to consider construction details and their application to ensure they remain functional throughout the building's lifespan.

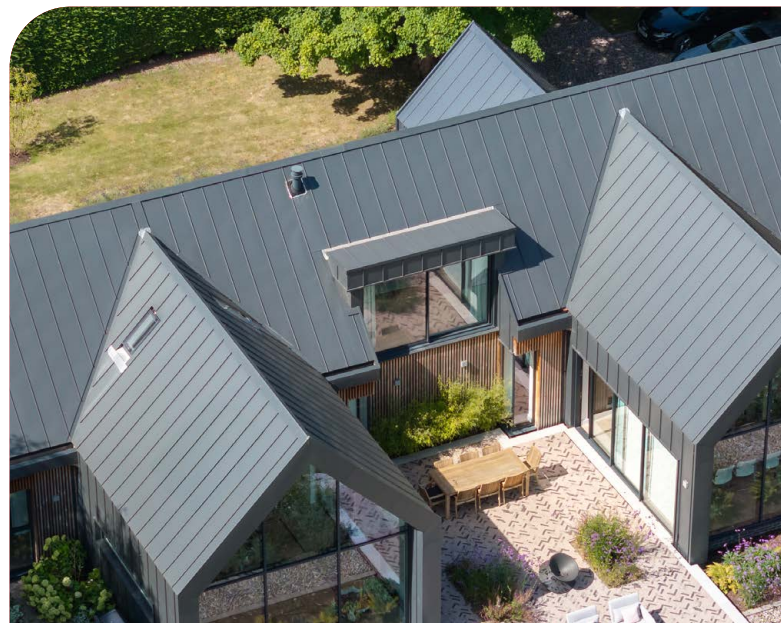


Non-vented roof build up

If a non-vented roof build up is to be considered it must be viewed with caution, due to the greater risk of condensation if incorrectly designed or poorly installed. This could result in underside corrosion or interstitial condensation.

A non-vented roof design relies heavily on the competence and attention to detail of the installer. If a non-vented structure is to be used then it is recommended that it is installed by a metal roofing specialist and customers do their own due diligence before selecting anyone to undertake the project.

Drawings of a non-vented roof build up available on request.



Materials

Pre-finished steel plays a critical role in the aesthetics and durability of the building envelope and requires careful consideration to ensure the most appropriate solution is chosen for optimum performance.

Pre-finished steel is highly sustainable with qualities well-suited to circular economic use; it is durable, flexible and adaptable and, at the end of life, is capable of being reused and infinitely recycled without loss of quality.

Colorcoat® pre-finished steel

Catnic Urban is manufactured from Colorcoat® Pre finished steel from Tata Steel, utilising a naturally inspired tonal pallet from its unique Colorcoat HPS200 Ultra® and Colorcoat Prisma® products. This variety affords a wealth of creativity to new build and refurbishment projects, widening the scope for architectural design.

Colorcoat® branded products have been specifically developed to comprise several layers, with each performing a different function.

Colorcoat® products have been developed for over 50 years and are used globally for building envelope, roofing and wall cladding systems in a wide range of industrial, commercial and residential buildings, including warehousing, distribution and logistics, as well as schools, offices, retail and leisure applications amongst many others.

The products are supported by a range of services such as comprehensive guarantees, colour consultancy, technical support and guidance and have been comprehensively tested and manufactured to the highest European standards.

Colorcoat HPS200 Ultra® and Colorcoat Prisma® have been developed specifically to support the aesthetic and functional requirements of modern architecture and offer long-term performance.



Materials

Colorcoat Prisma®

Colorcoat Prisma® utilises cutting edge three layer manufacturing technology to create an optimised, robust, chrome free pre-finished steel product.

The contemporary colour range includes the Elements selection of natural metal colours as well as a wide selection of inspired Matt shades such as Matt Metallics ideal for facade applications.

Colorcoat Prisma® not only uniquely pushes the boundaries for UV performance but also outperforms the highest European corrosion resistance standards.

- Revolutionary 3 layer coating technology, providing enhanced aesthetics and long term performance and durability.
- Robust and durable topcoat for easier handling and processing.
- Reverse side branding making traceability easy.
- Fully REACH compliant & free of chromates including hexavalent chrome.
- BBA certified for durability in excess of 40 years.
- Made in the UK and fully recyclable.

Colorcoat Prisma® has been tested to EN 13823 and EN ISO 1716 and can be classified in accordance with EN 13501-1 as A1.

Colorcoat HPS200 Ultra®

Colorcoat HPS200 Ultra® pre-finished steel provides exceptional performance and corrosion resistance for building envelope applications. It is backed up with even more extreme testing and real world global data to demonstrate the best combination of excellent colour stability, gloss retention and outstanding durability.

- Optimised Galvalloy® metallic coating for exceptional corrosion resistance and cut edge protection.
- Surpasses requirements of RUV4 and RC5 as per EN 10169 proving excellent colour and gloss retention and corrosion resistance.
- Scintilla® embossed as a mark of authenticity from Tata Steel.
- Available with the Confidex® Home Guarantee for individual residential dwellings and Confidex® Guarantee for the weatherside of industrial and commercial buildings.
- Fully REACH compliant & free of chromates including hexavalent chrome.
- BBA certified for durability in excess of 40 years.
- Made in the UK and fully recyclable.

Colorcoat HPS200 Ultra® has been tested to EN 13823 and EN 11925-2 and can be classified in accordance with EN 13501-1 AS c-S2, D0.

Colours

The Catnic Urban standard colour range is made up of eight colours that have been selected to blend harmoniously with the urban environment. Colours emulating conventional materials such as zinc, copper and lead allow customers to match their roof to a range of designs.

Catnic Urban also has a wider colour card available upon request. These colours are subject to an uplift in cost and extended lead times.



British Standard or RAL reference numbers shown above, represent the nearest colours and are not exact matches to Colorcoat HPS200 Ultra®.

Catnic Urban standard colours are all supplied in matt unless otherwise requested.

Guarantees



Confidex® Guarantee

The Confidex® Guarantee from Tata Steel offers the most comprehensive guarantee for pre-finished steel products. It is available for the weatherside of industrial and commercial buildings using Colorcoat HPS200 Ultra® and Colorcoat Prisma® for up to 40 years.

Upon online registration it is offered directly to the building owner with no inspection or maintenance to maintain its validity except when Colorcoat HPS200 Ultra® and Colorcoat Prisma® are used on a roof or wall that has a Photovoltaic (PV) installation.

To demonstrate Tata Steel's commitment to the environment and renewable energy offerings, Colorcoat HPS200 Ultra® and Colorcoat Prisma® provides the comprehensive Confidex® Guarantee for the pre-finished steel that is under clip and fix photovoltaic (PV) frame modules on a roof or wall. This provides the building owner with the confidence that installing a PV array will not have a detrimental effect on the performance of the pre-finished steel, and that all parts of the roof and wall are covered for the same duration of the Confidex® Guarantee.



Confidex® Home Guarantee

Catnic Urban benefits from the Tata Steel Confidex® Home Guarantee. Offered free of charge directly to the homeowner when registered for online, this 25-year performance guarantee for Colorcoat HPS200 Ultra® and Colorcoat Prisma® is available when used as part of a Catnic Urban standing seam roof or wall cladding system for homes in the UK and Ireland, regardless of environment, location, colour and distance to the coast.

It provides homeowners with the utmost confidence in our Catnic Urban system. Fully and easily transferable in the event the property is sold to new owners, the 25-year guarantee is testament to the performance of the material and our confidence that it will stand the test of time.

What's more, the Guarantee enables developers to offer added peace of mind to prospective home buyers, with an additional 15 years on top of the 10-year NHBC guarantee.

While, as a result of the Confidex® Home Guarantee being a direct agreement with Tata Steel, homeowners can benefit from the assurance that, in the unlikely event of a material fault, it can be promptly resolved and rectified, without the need to go via the supply chain or their home insurance.

*The Confidex® Home Guarantee excludes guttering, soffits and fascias.

Credentials



BBA approved

Catnic Urban Roofing; Wall Cladding; and Urban Seam Façade have been approved by the British Board of Agreement under certificate 09/4698.



100% Recyclable – cradle to cradle

Catnic always ensures our products meet or exceed the performance regulations of current legislation. As part of Tata Steel UK, we carefully measure the impact of Catnic Urban throughout its life from cradle to cradle. The steel used in Catnic Urban is 100% recyclable with zero de-gradation in the materials properties when recycled, unlike nearly all other construction materials.



BES 6001

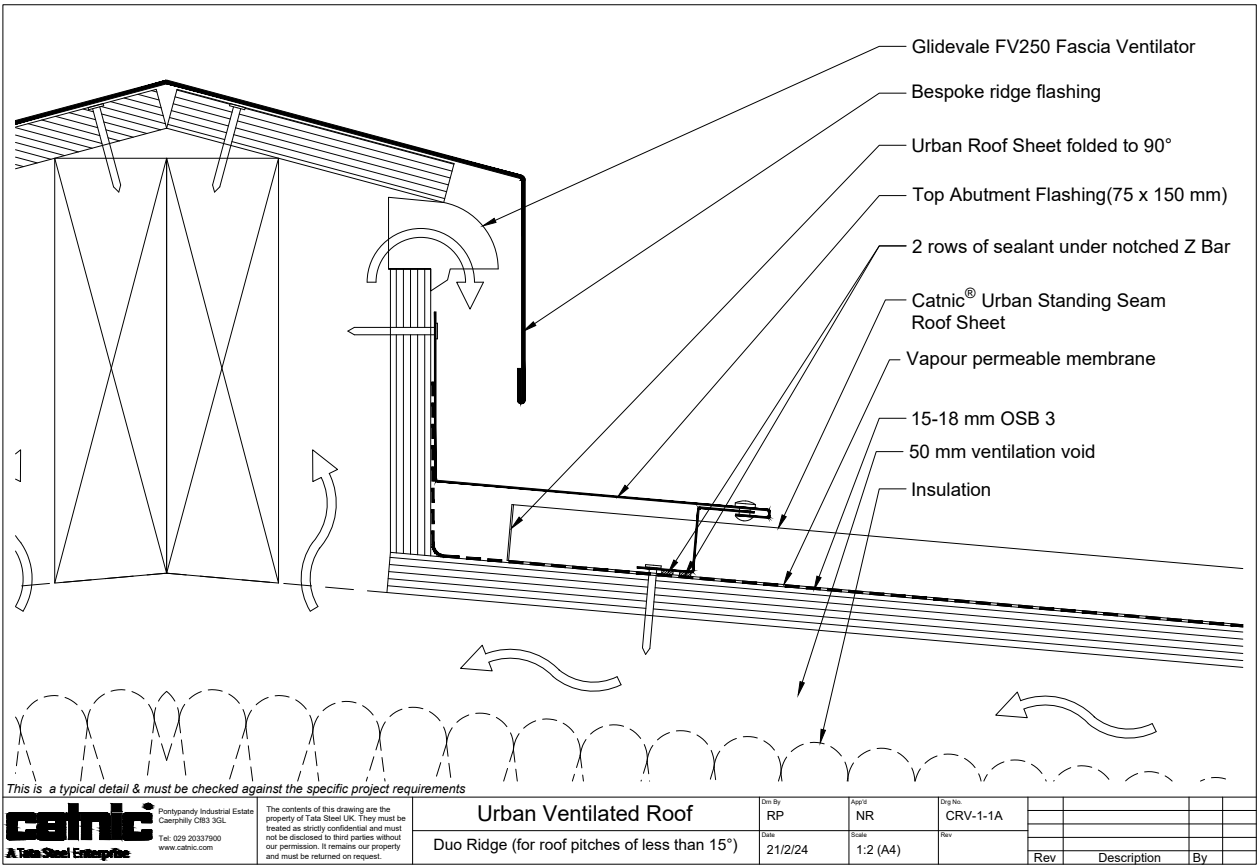
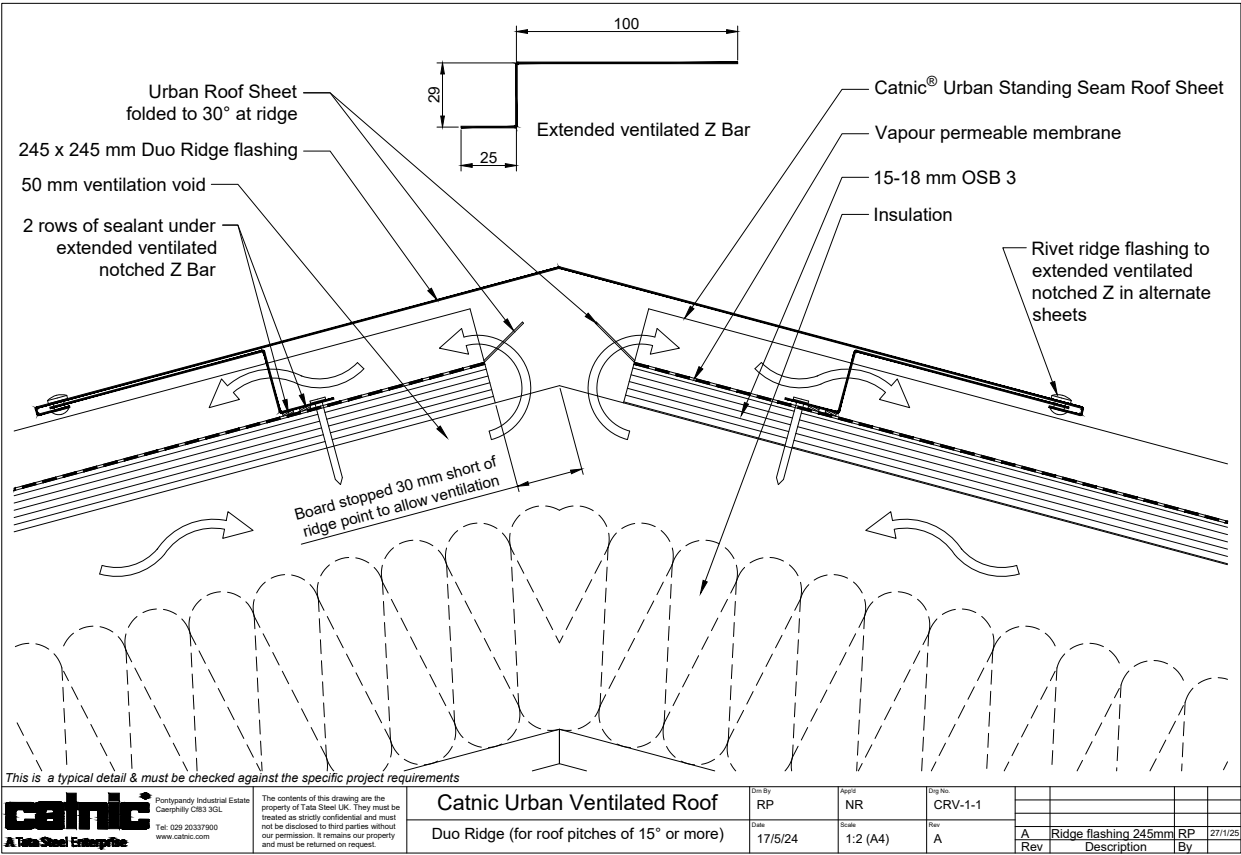
BES 6001 delivers a method for us to benchmark and show that we are continuously improving our sustainability credentials. We have ensured Catnic Urban standing seam roof and cladding has been certified to BES 6001 so you can rest assured that when specifying and installing this sustainable product you will maximise the potential for obtaining credits under the Responsible Sourcing of Materials sections of BREEAM.

BES 6001 has been published to enable construction product manufacturers to ensure and then prove that their products have been made with constituent materials that have been responsibly sourced. The standard describes a framework for the organisational governance, supply chain management and environmental and social aspects that must be addressed to ensure the responsible sourcing of construction products.

Tata Steel is the first pre-finished steel manufacturer to secure BES 6001 Responsible Sourcing certification. The Colorcoat® manufacturing site has an environmental management system which has been certified to ISO 14001, as well as ISO 50001 Energy Management. For Catnic Urban the focus has been on selecting raw materials with a lower environmental impact than required by current legislation and high-performance alternatives. Both Colorcoat® products are fully REACH compliant and free of chromates including hexavalent chrome.

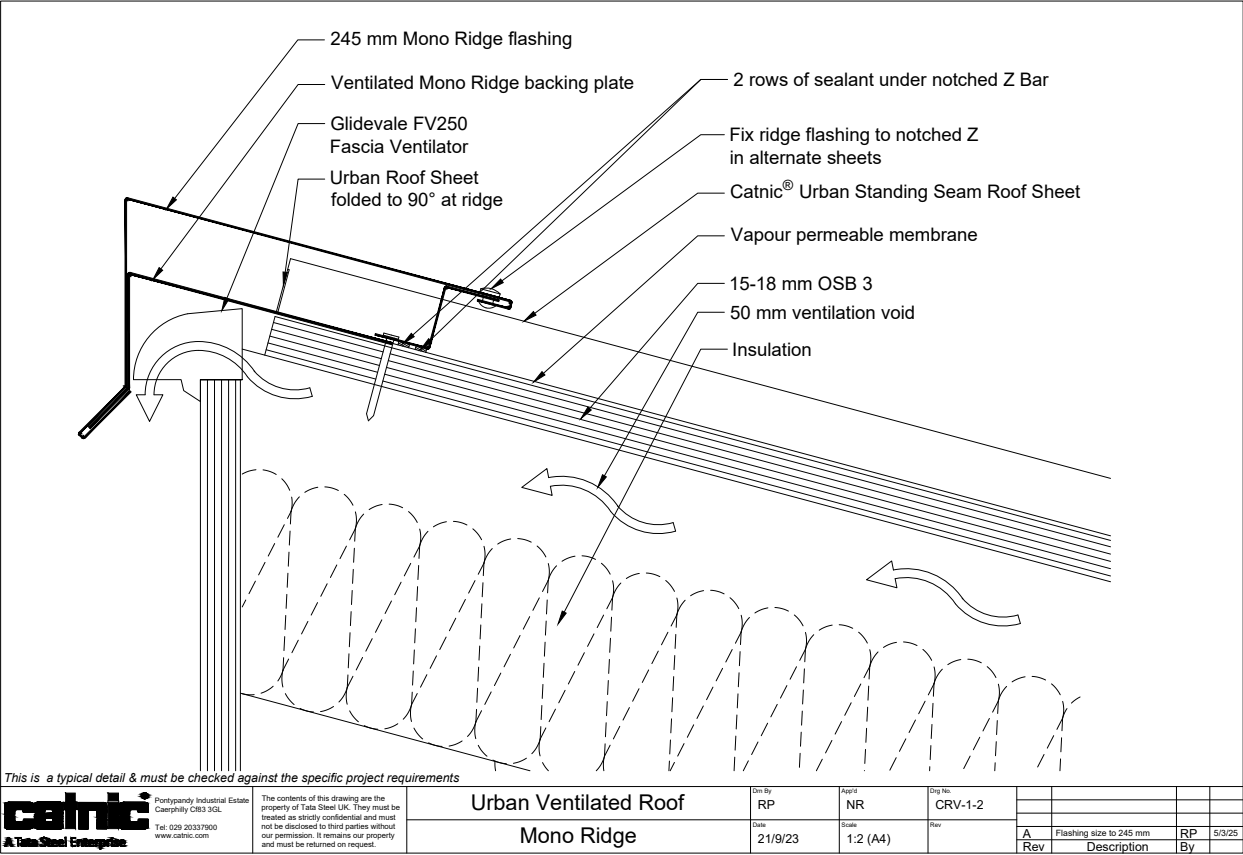
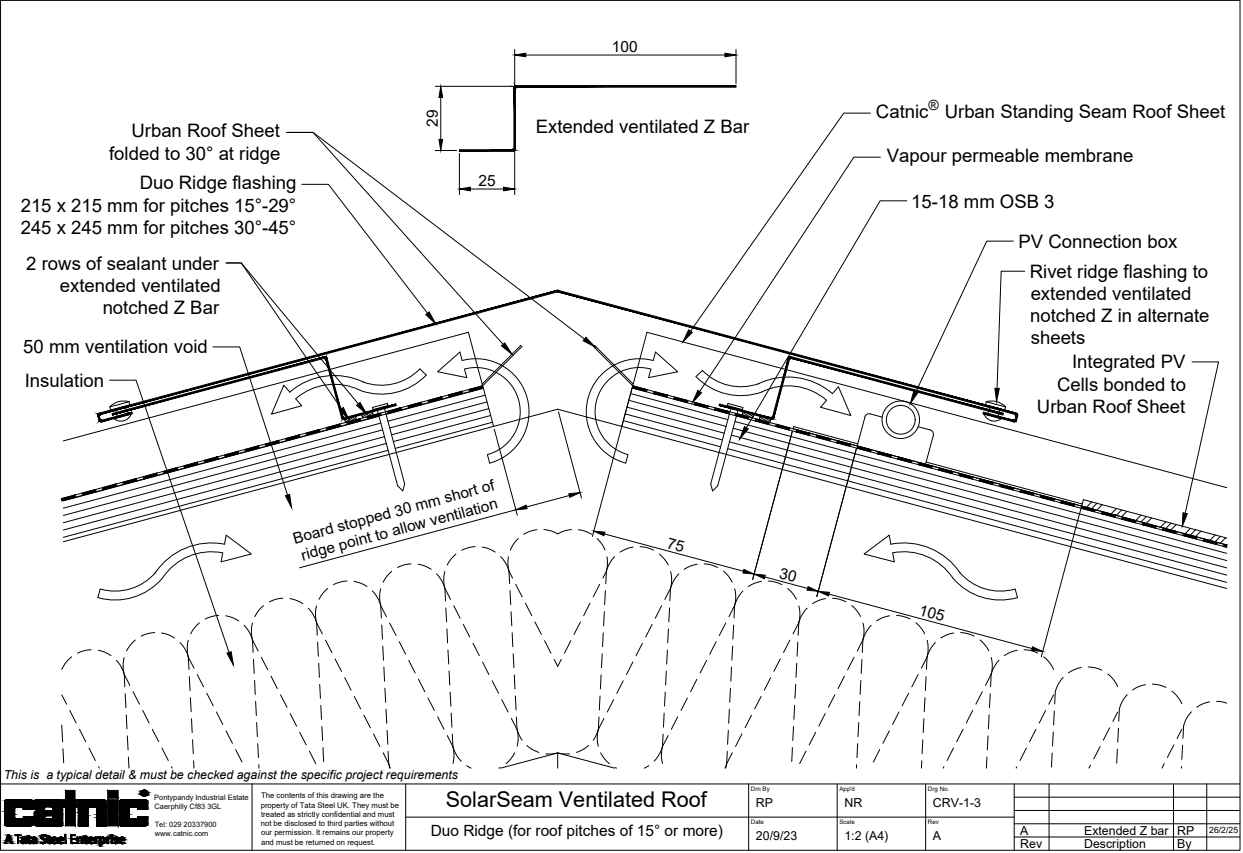
Technical Drawings

Vented Roof



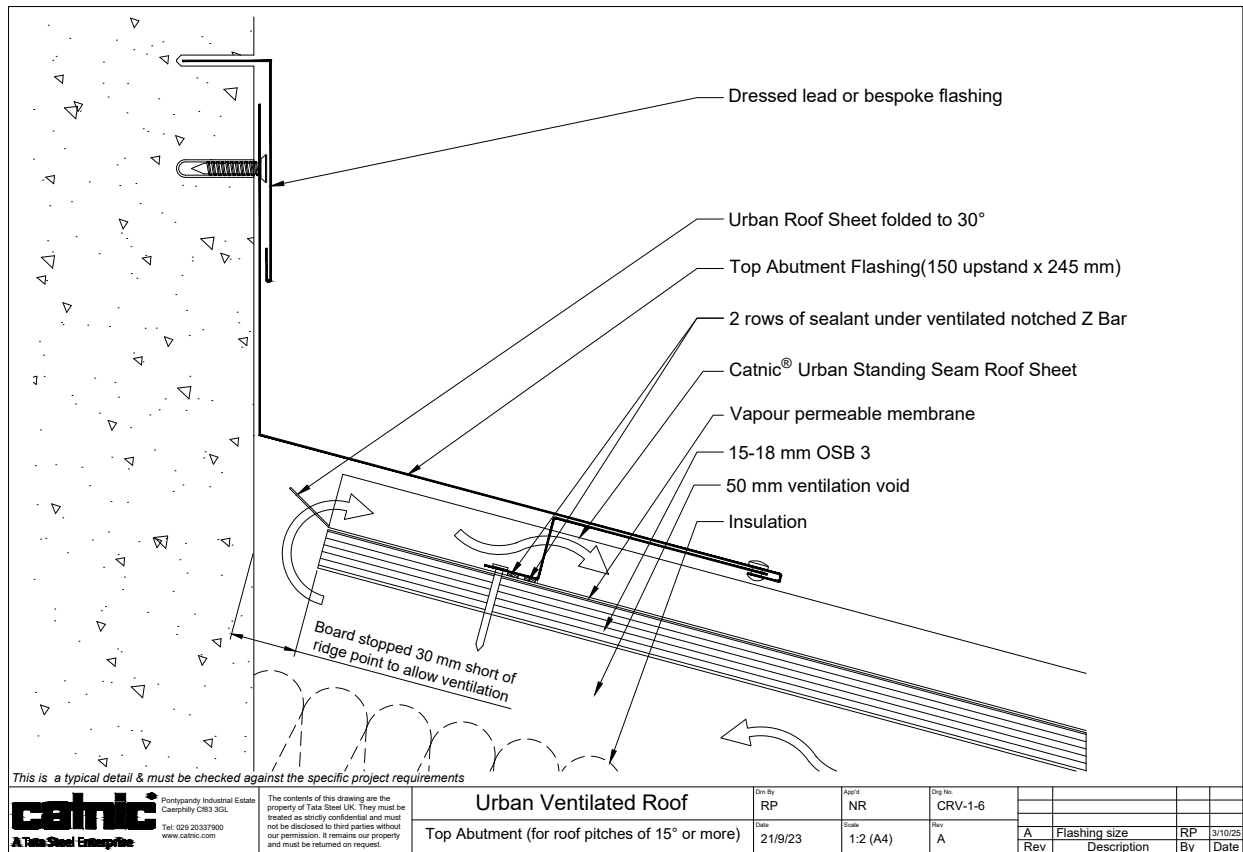
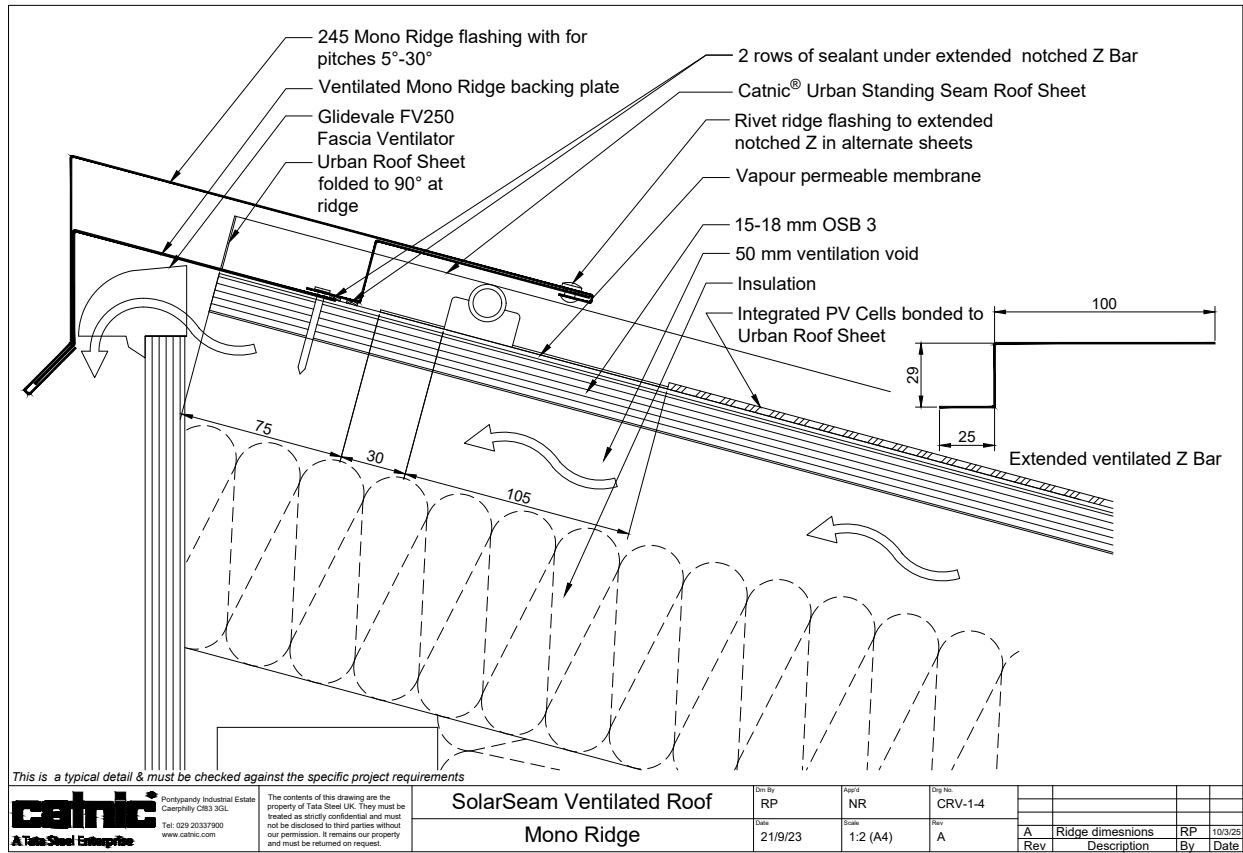
Technical Drawings

Vented Roof



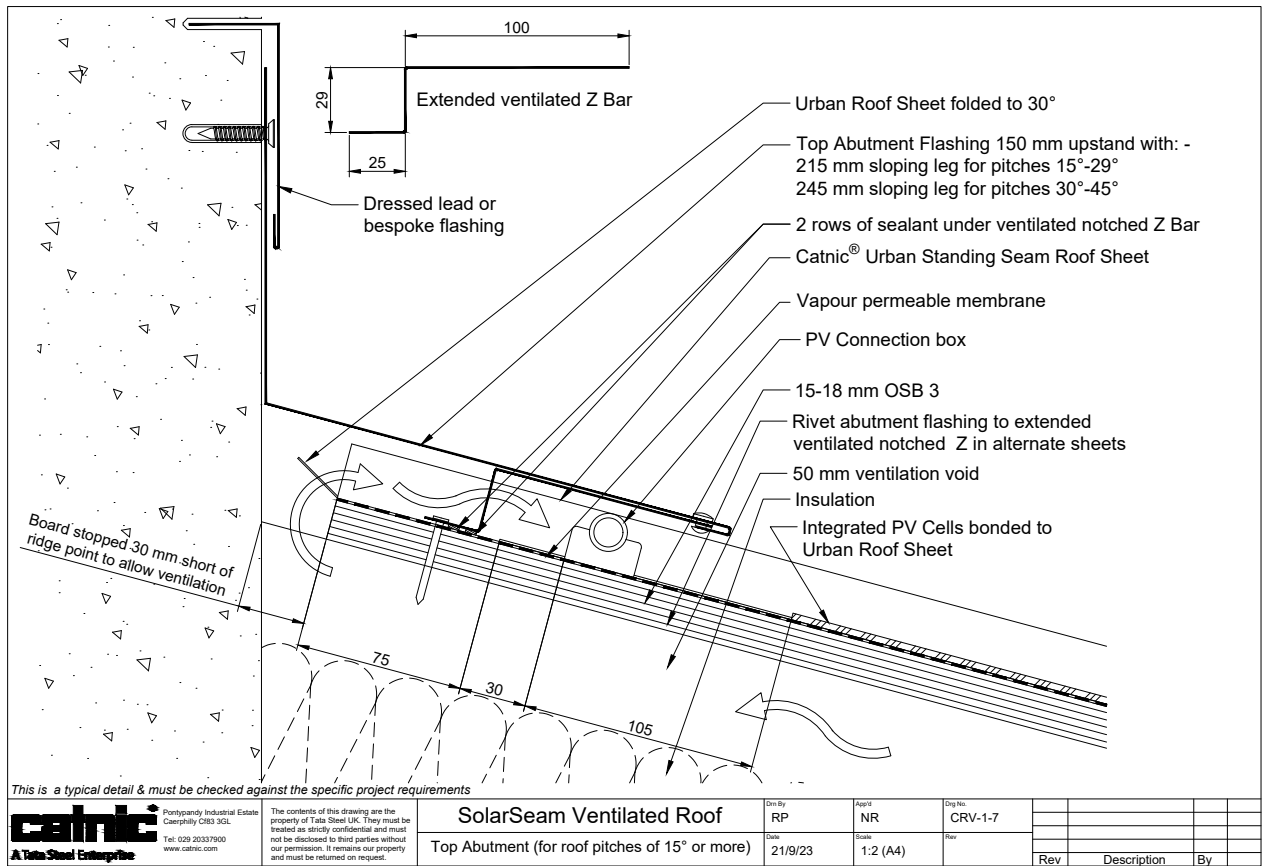
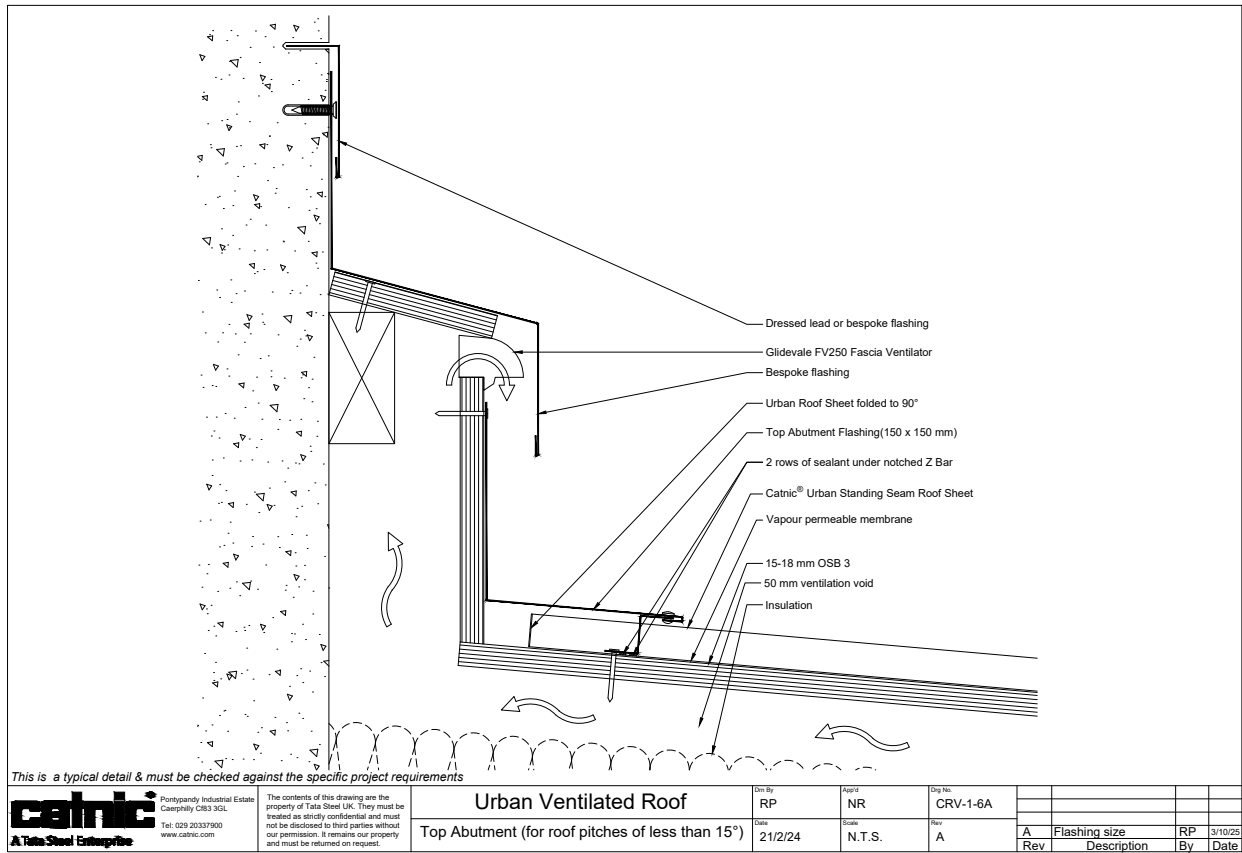
Technical Drawings

Vented Roof



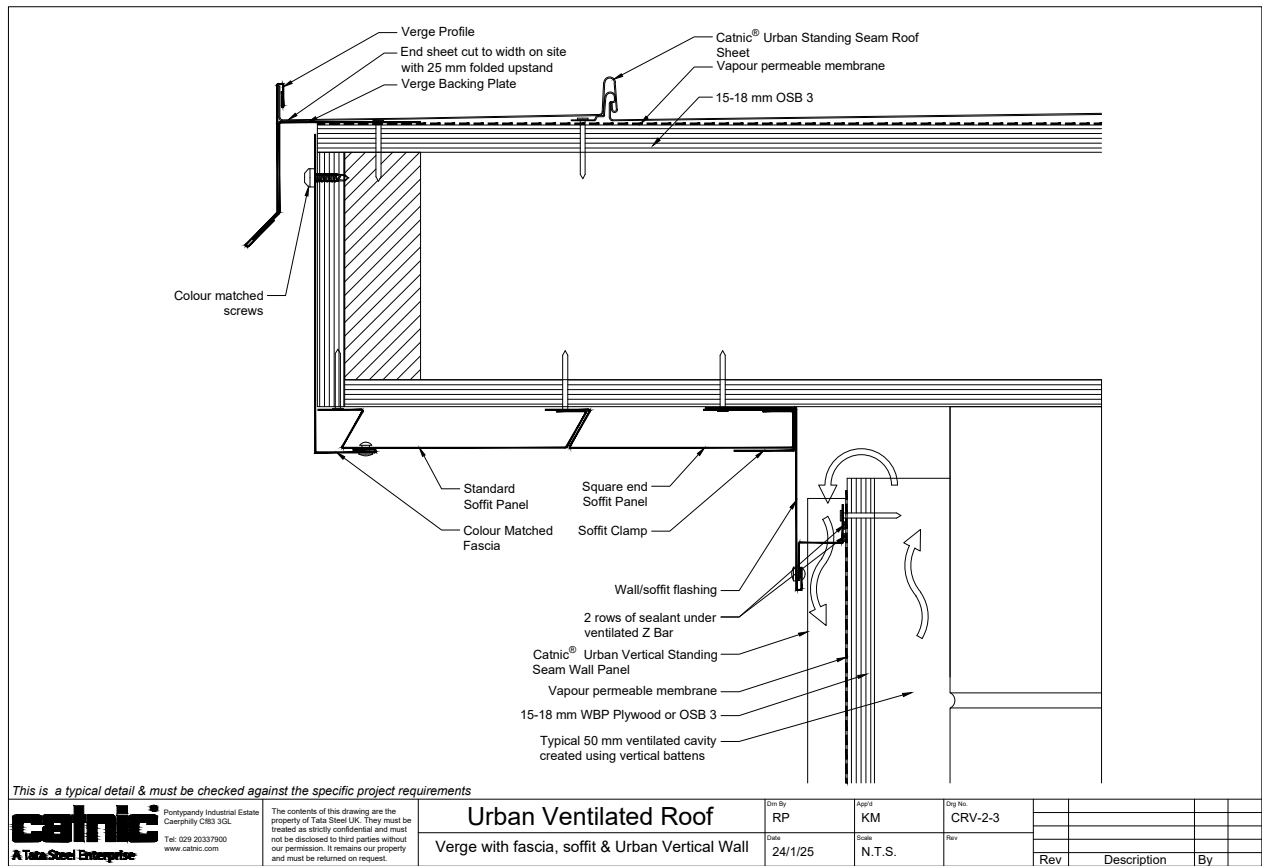
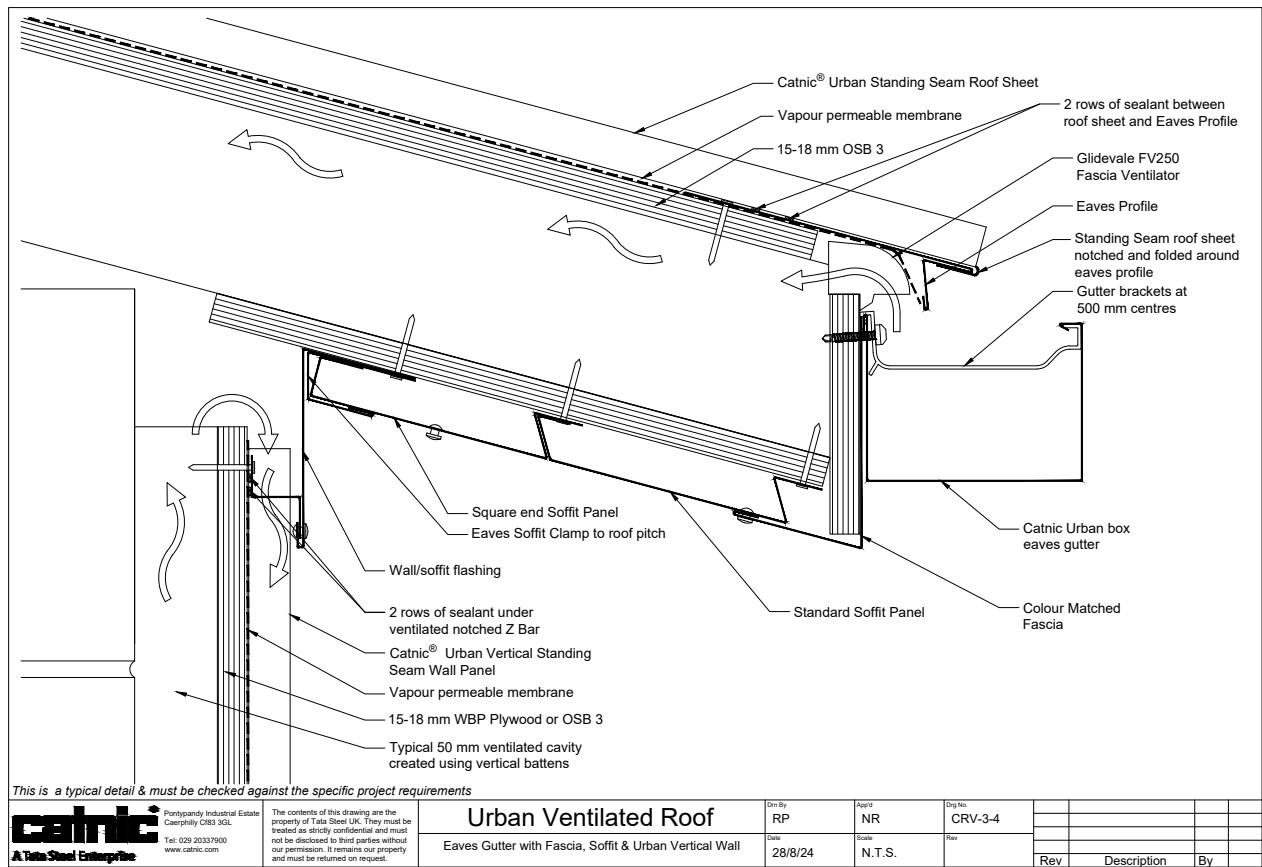
Technical Drawings

Vented Roof



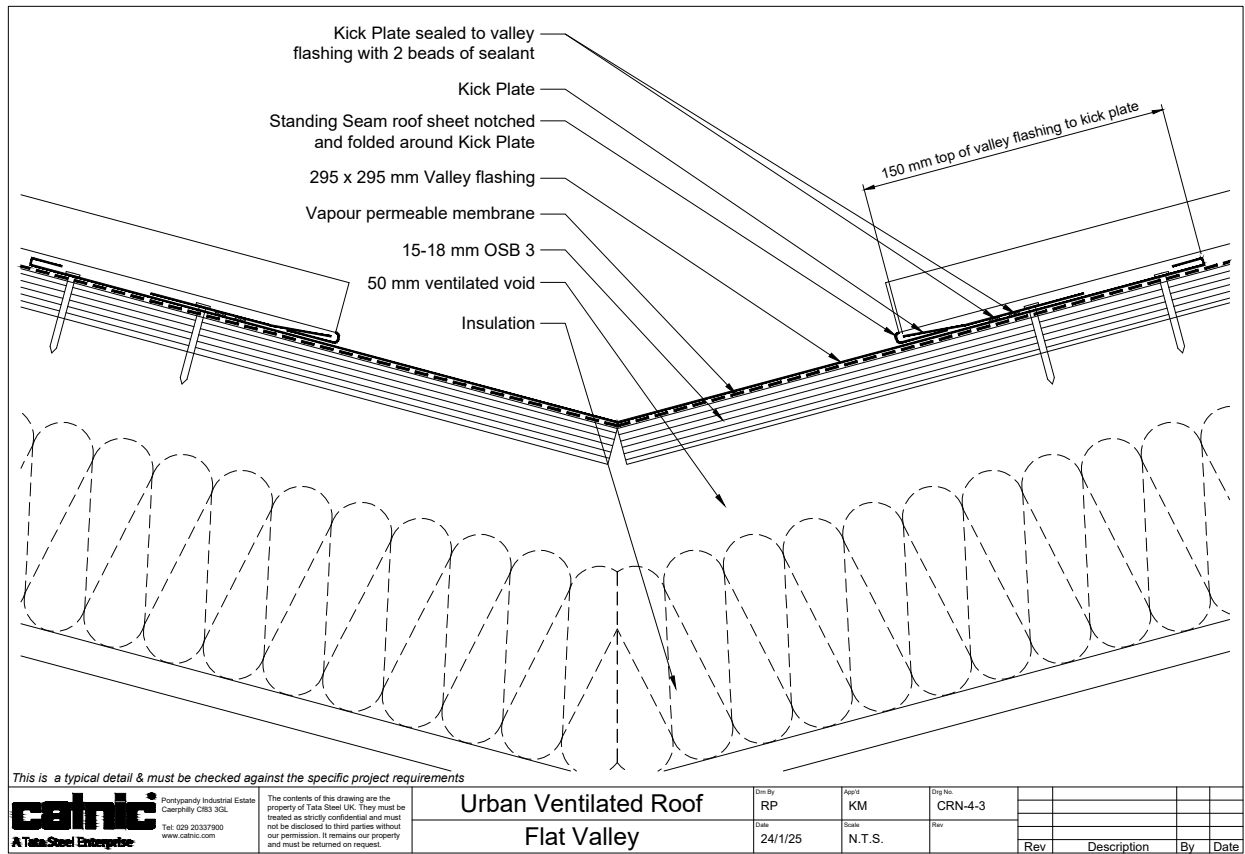
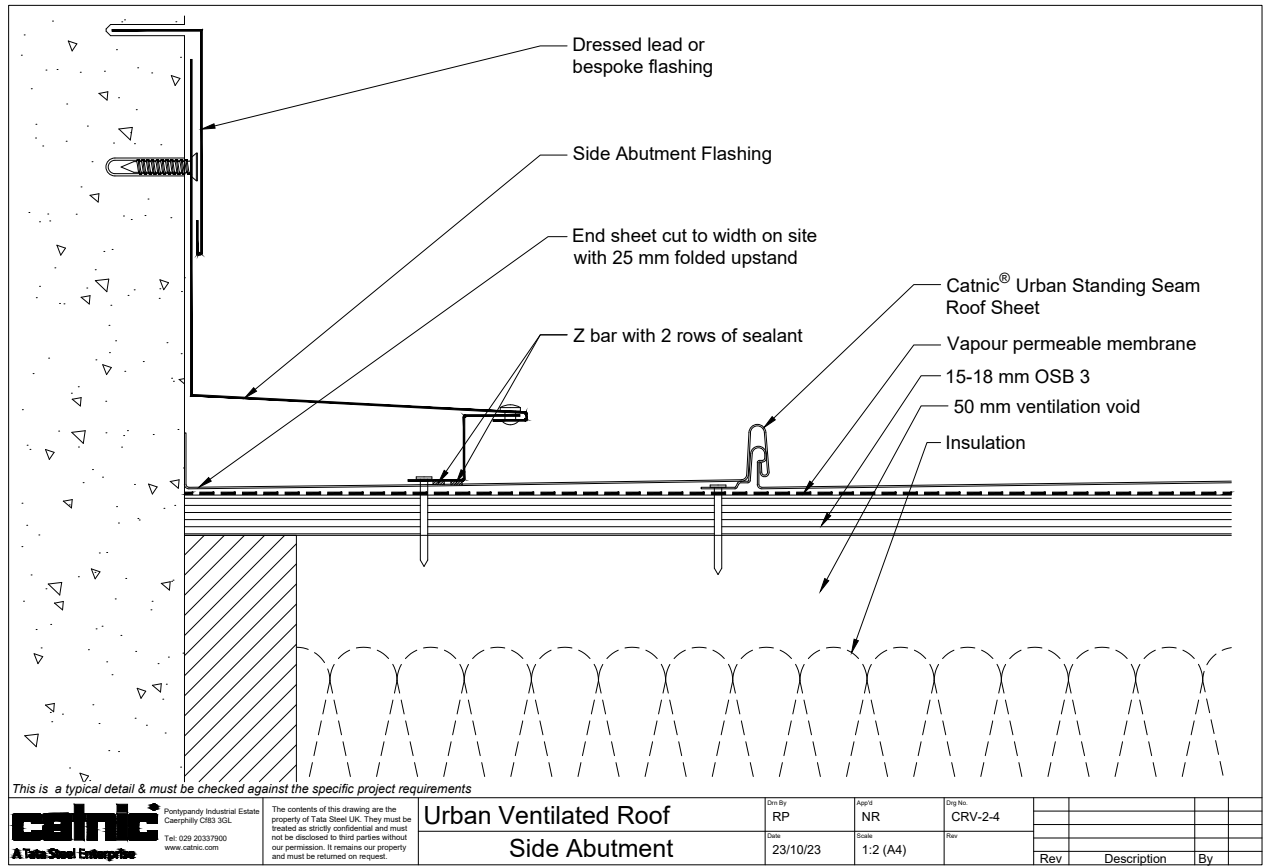
Technical Drawings

Vented Roof



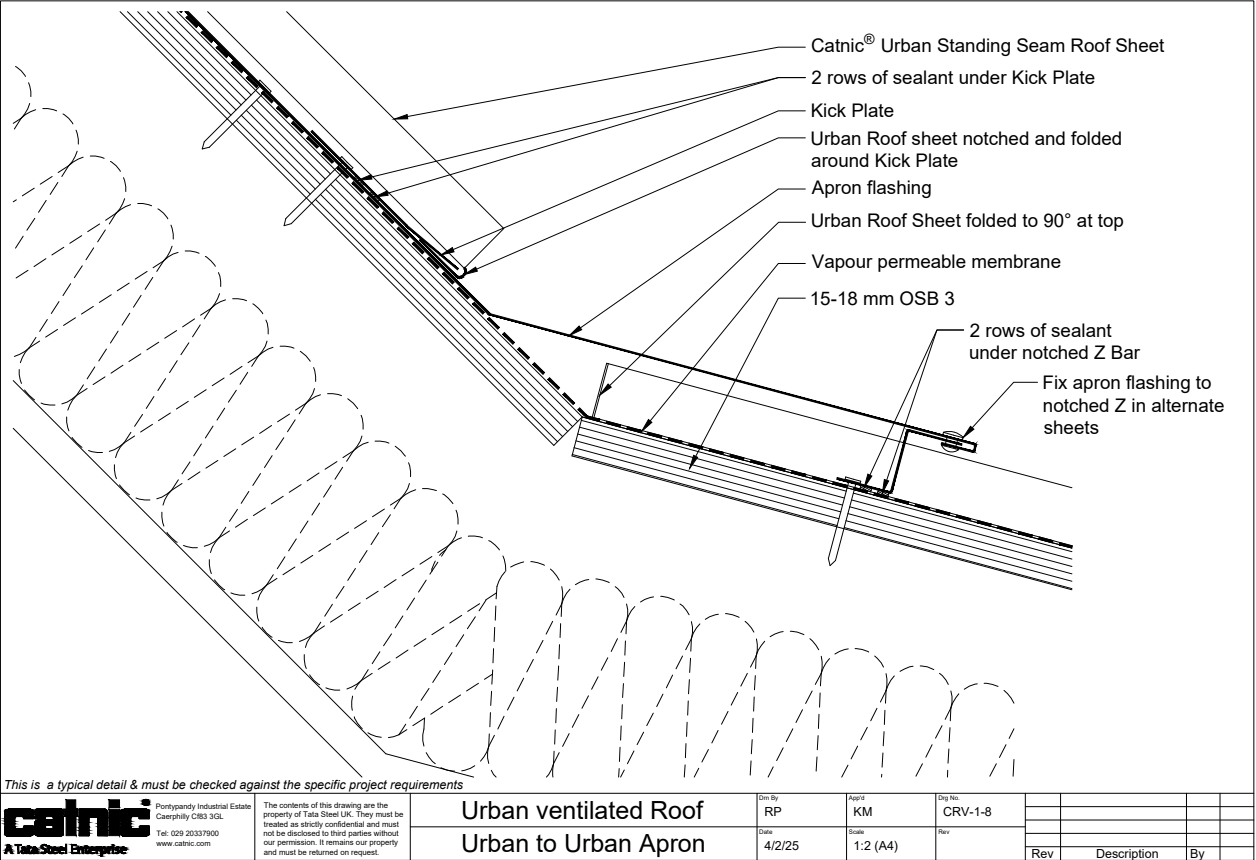
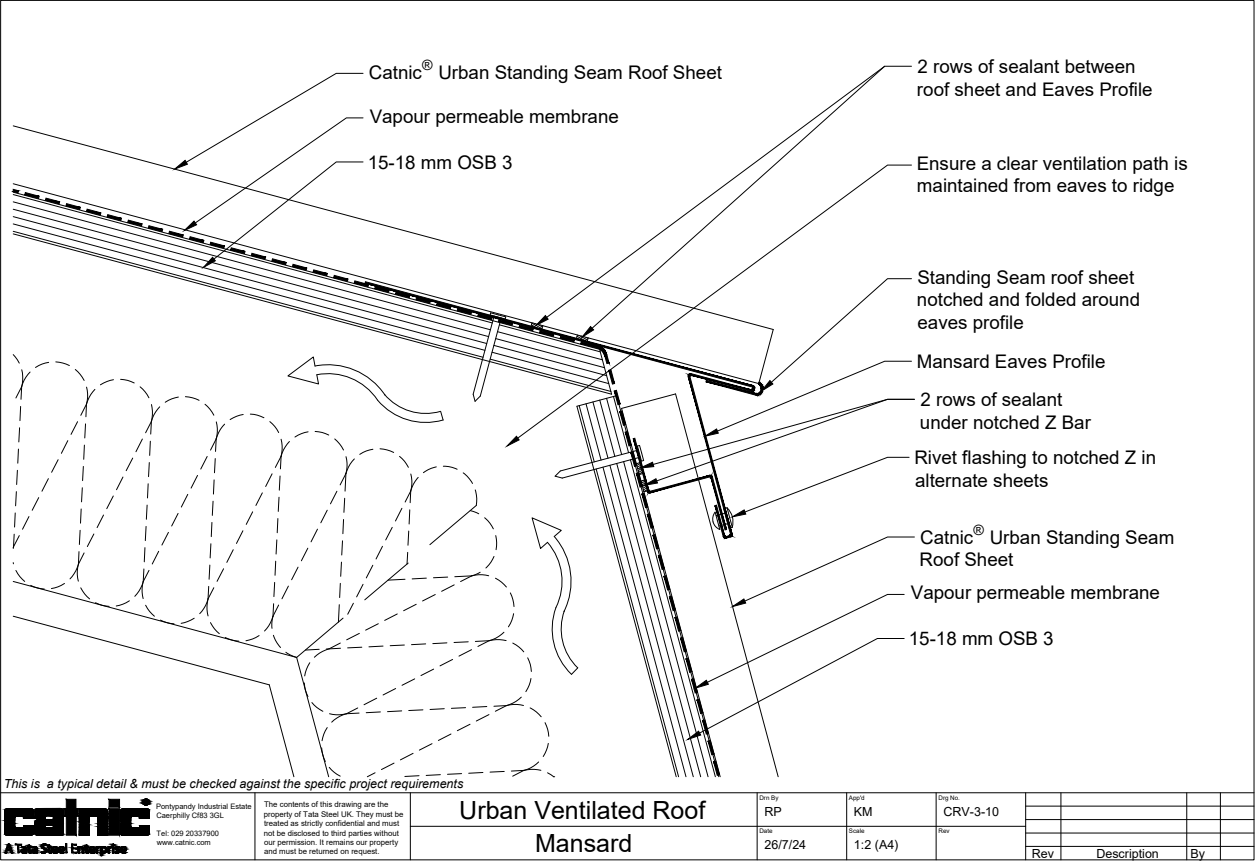
Technical Drawings

Vented Roof



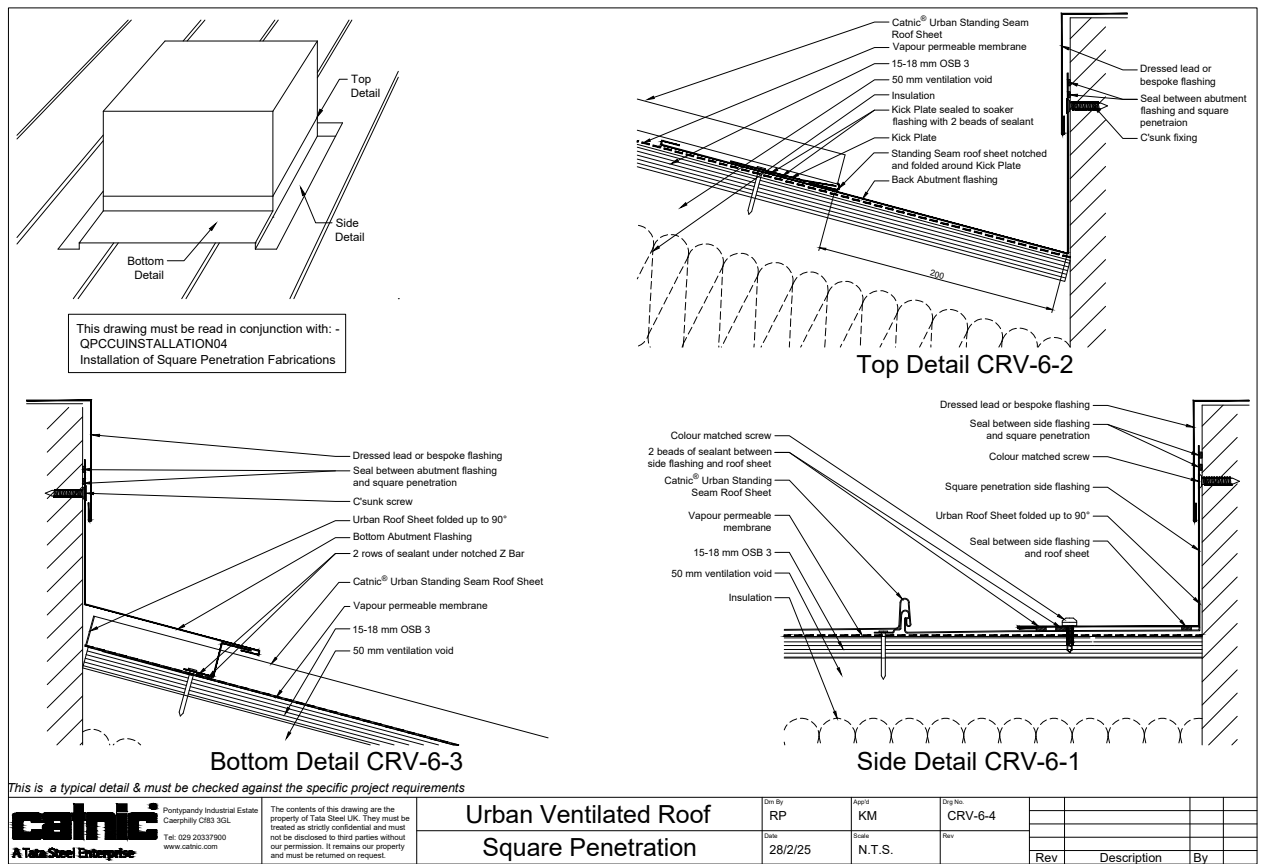
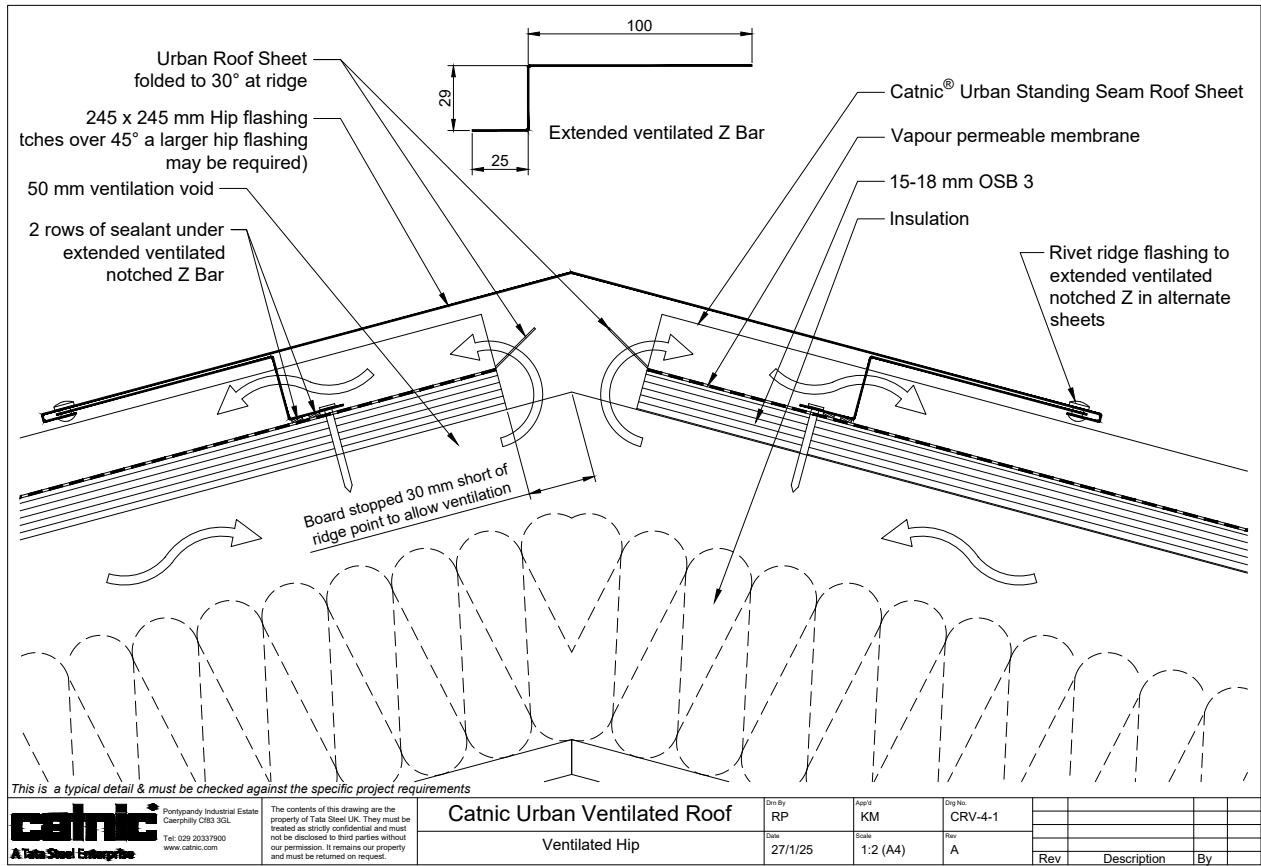
Technical Drawings

Vented Roof



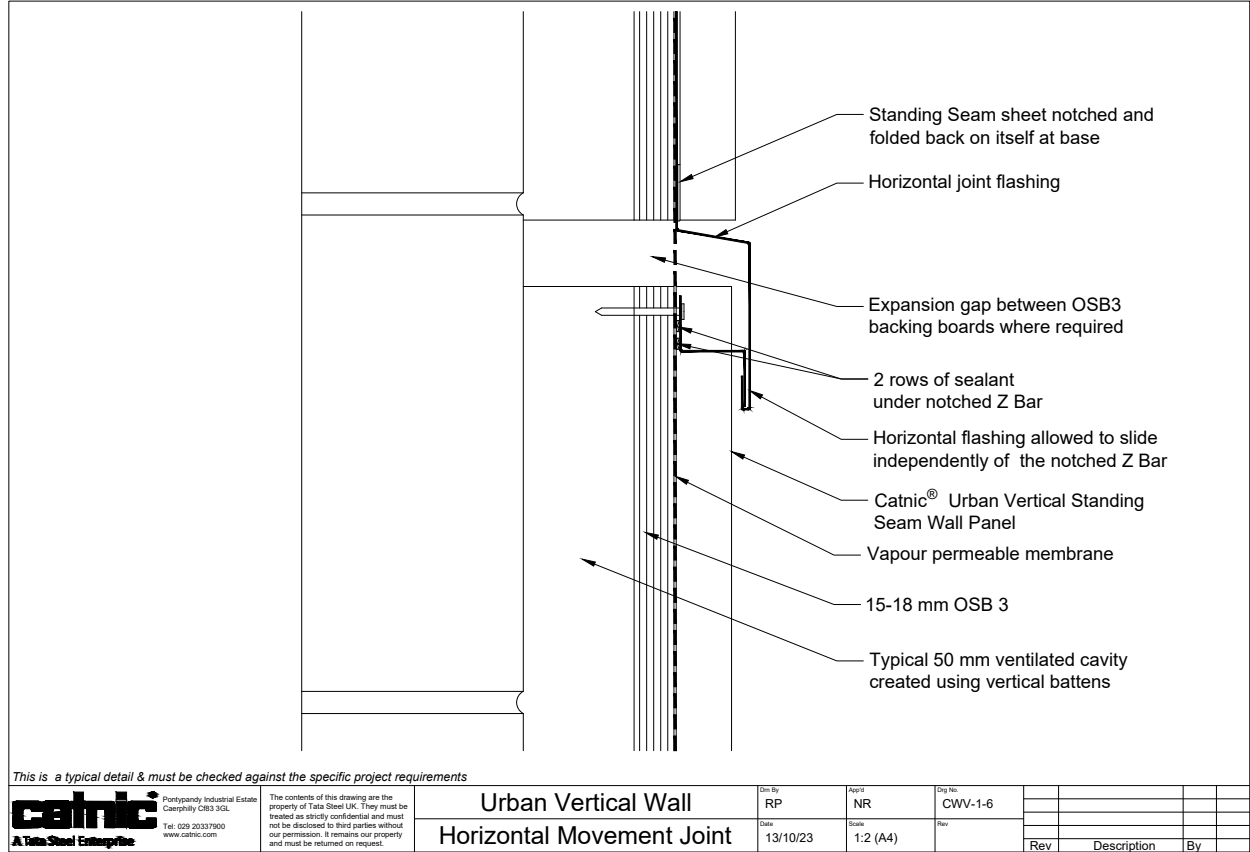
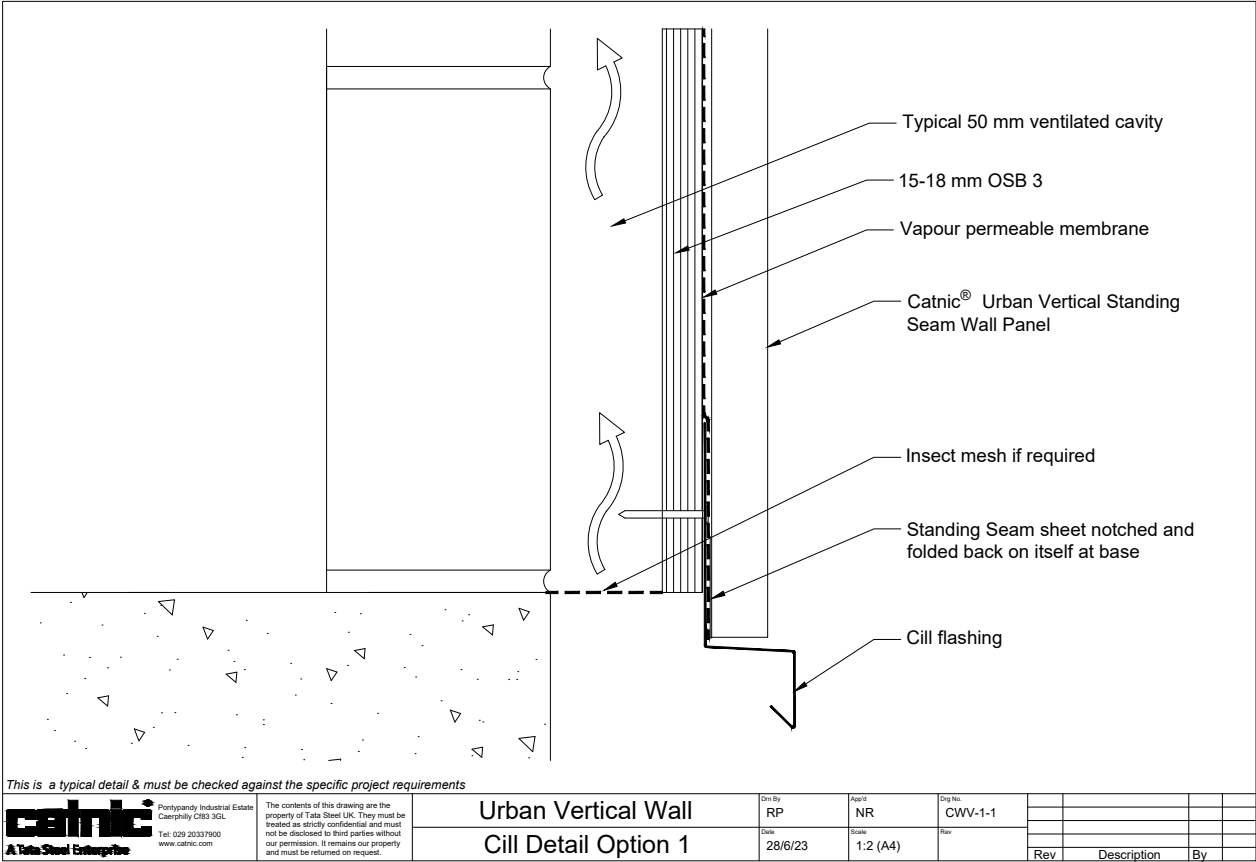
Technical Drawings

Vented Roof



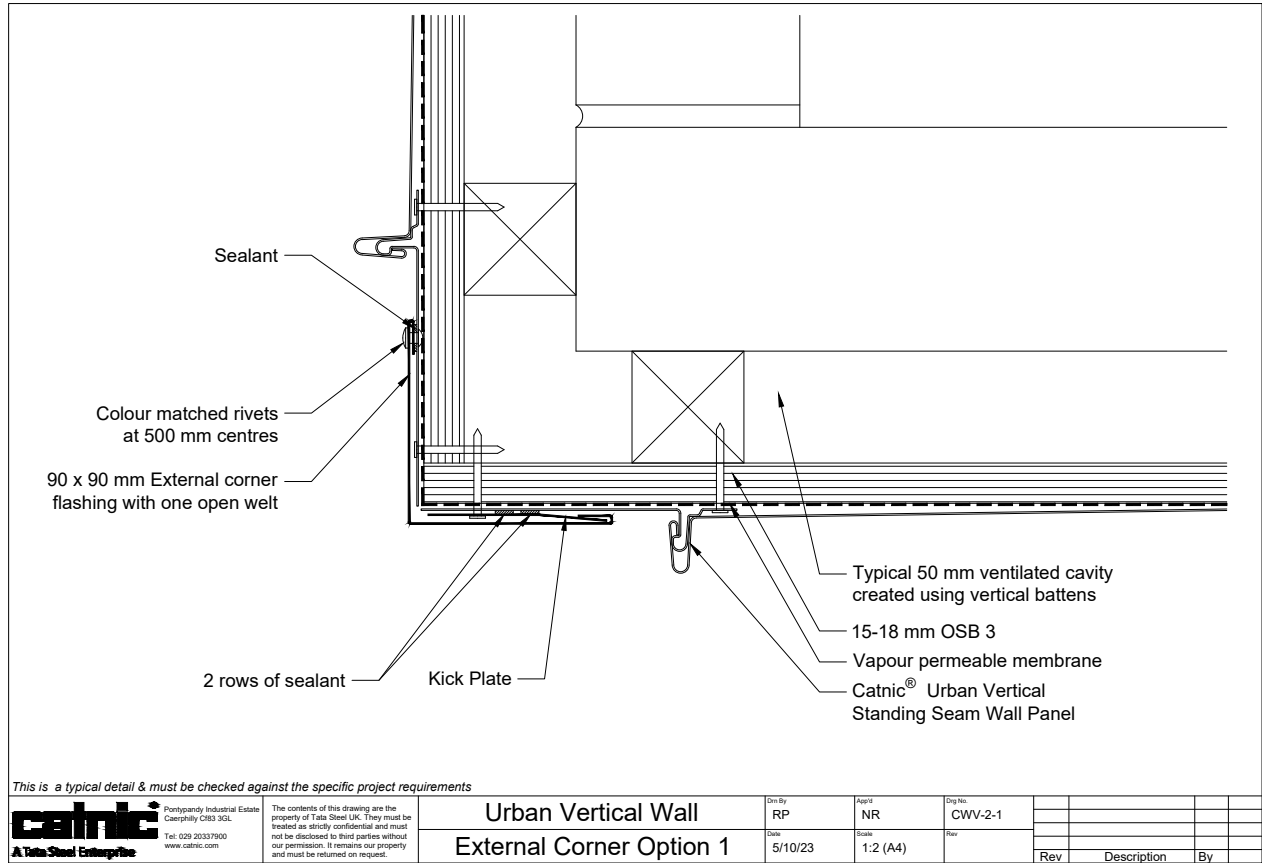
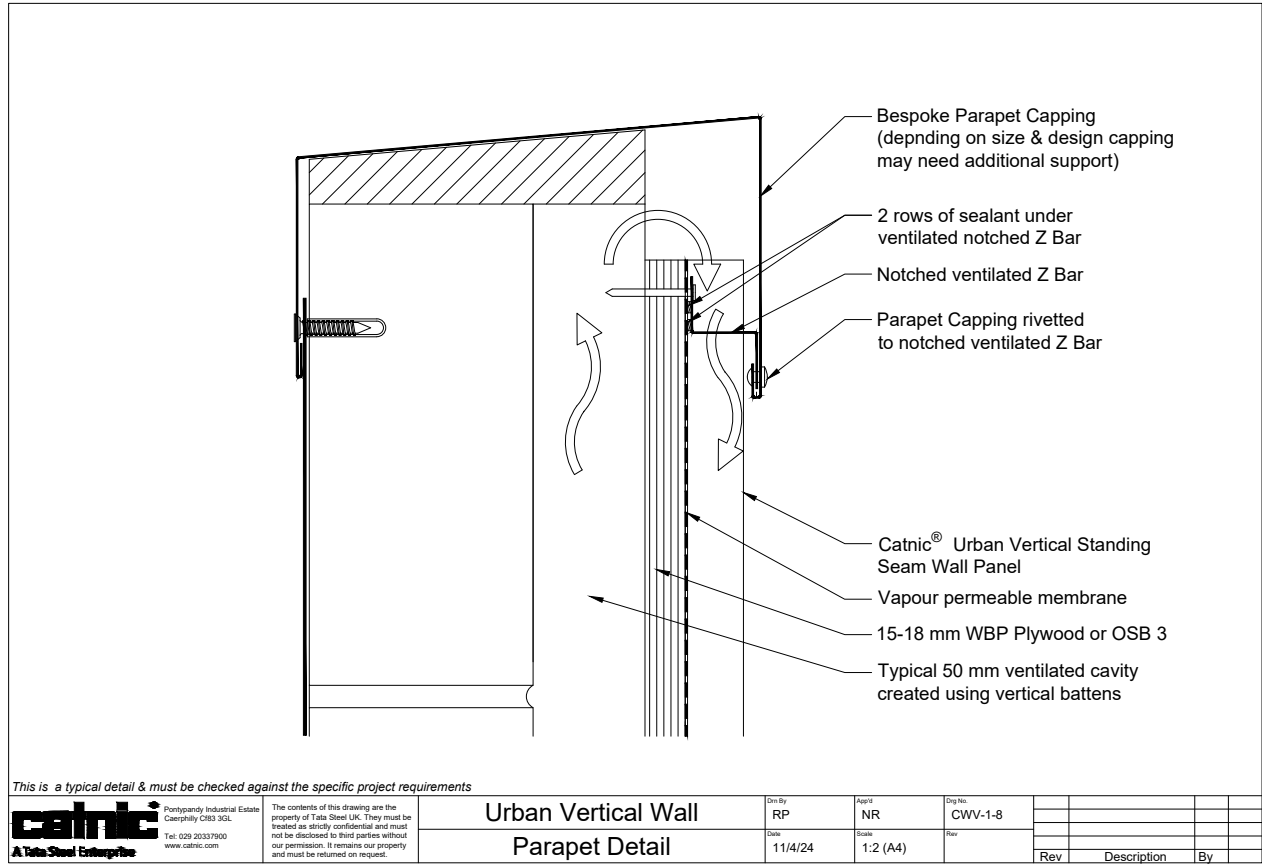
Technical Drawings

Vertical Wall



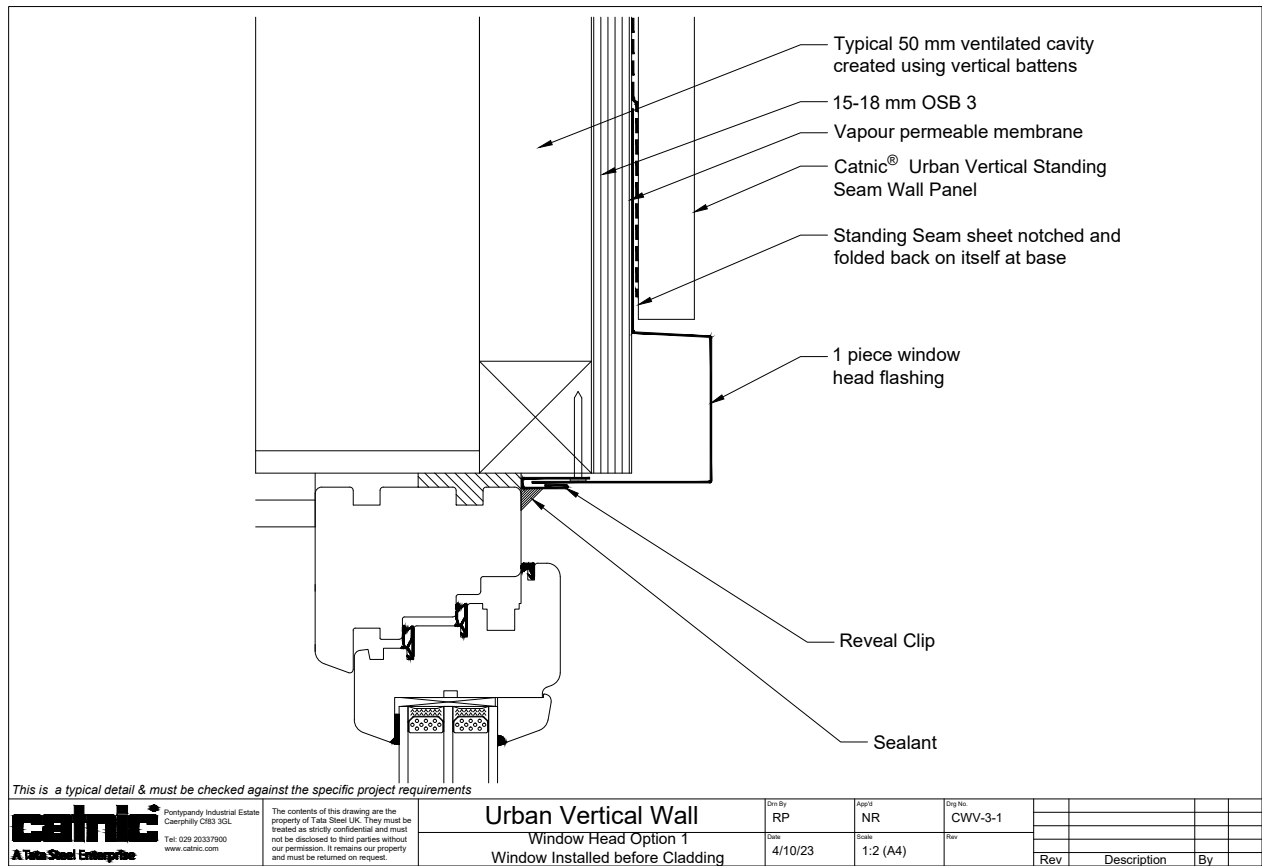
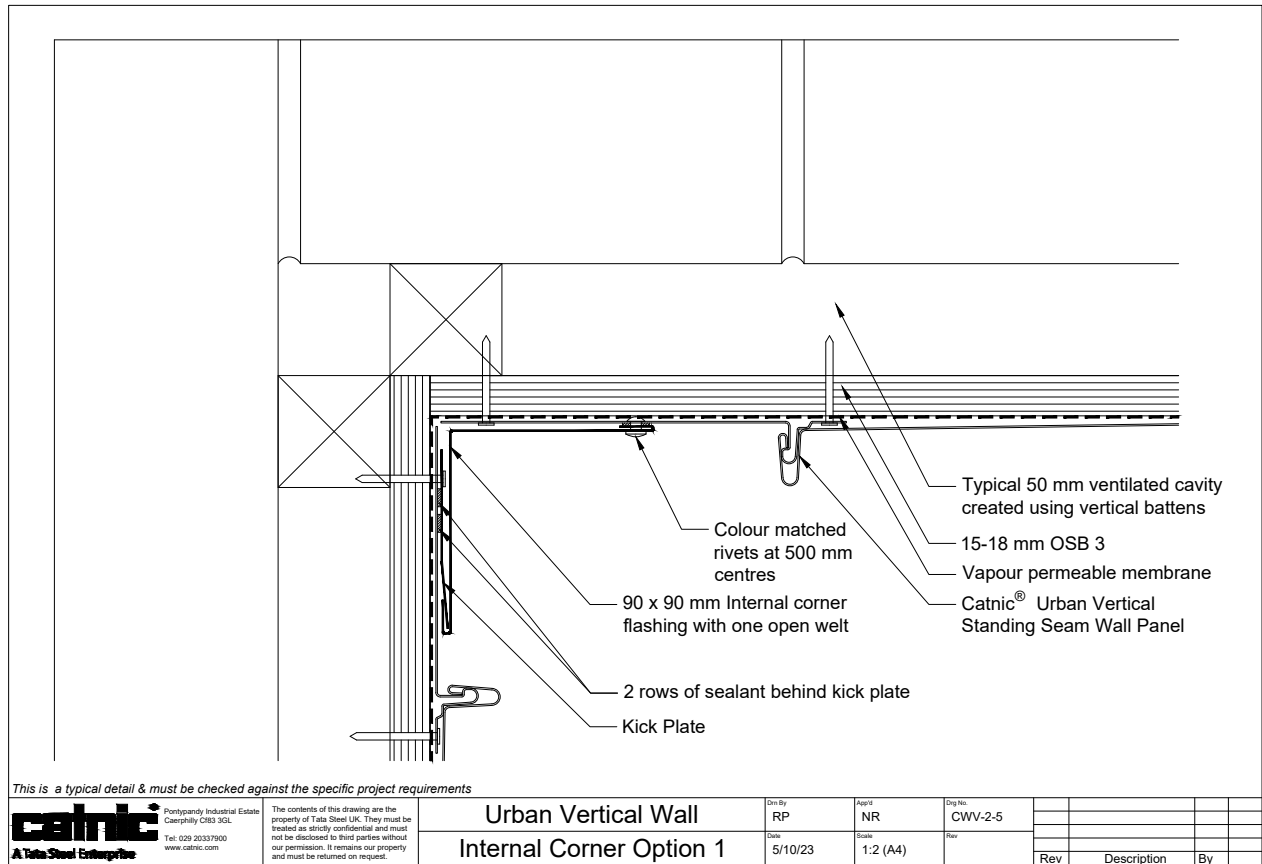
Technical Drawings

Vertical Wall



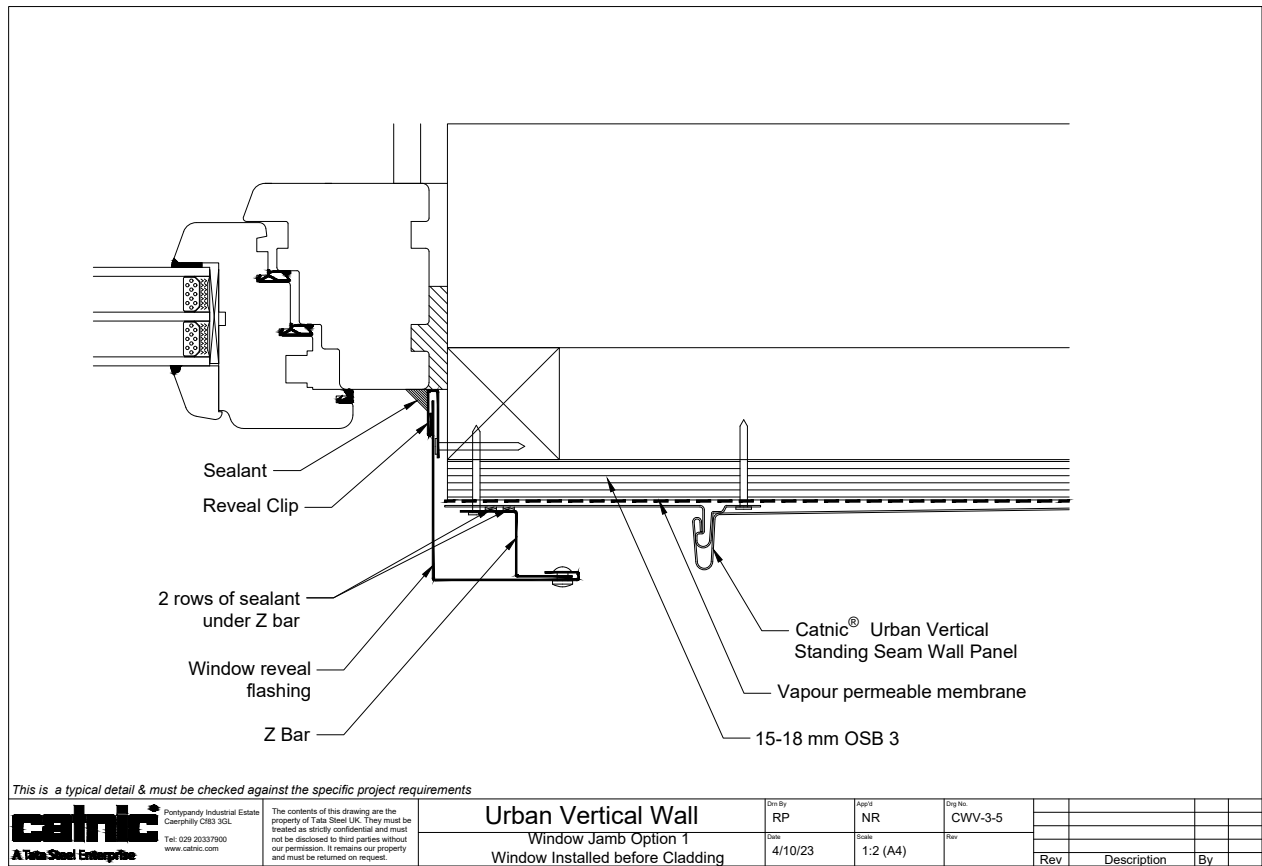
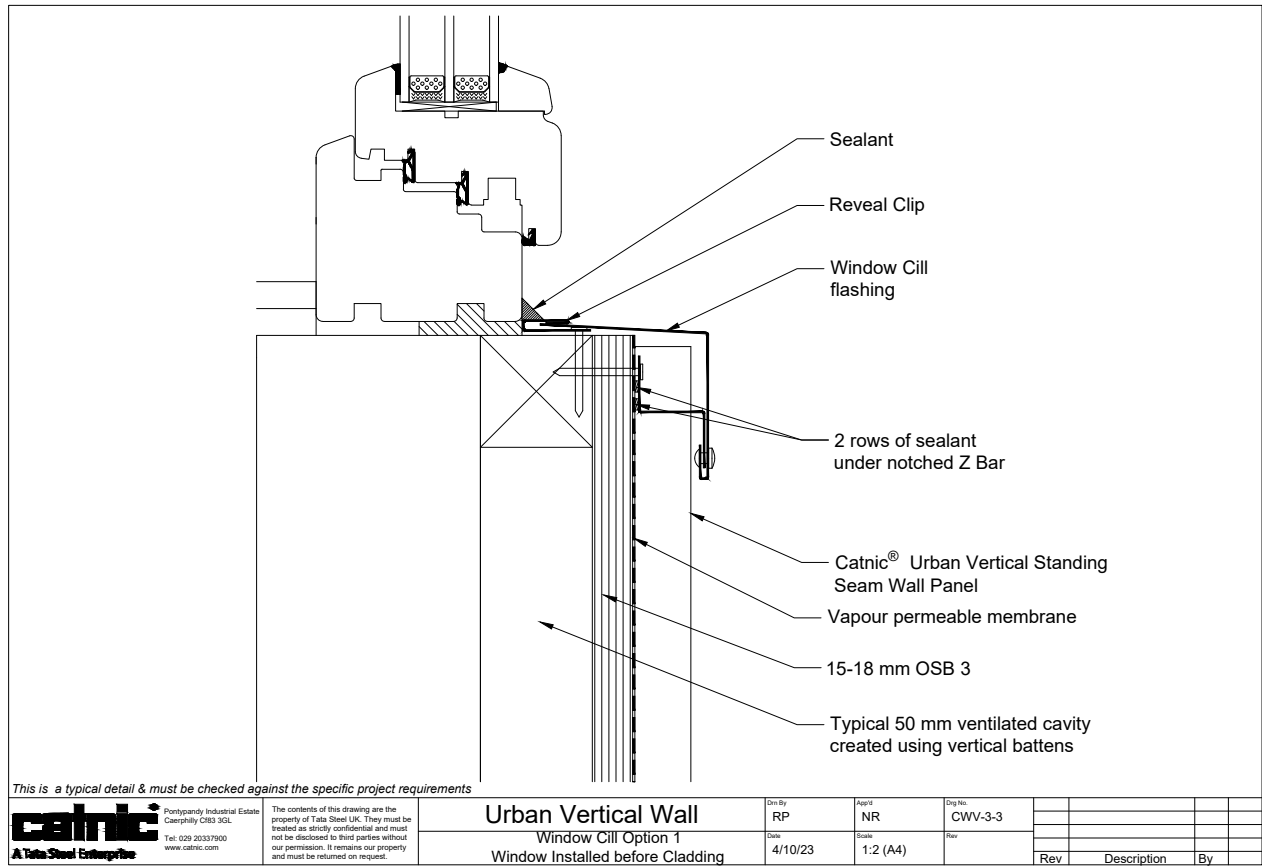
Technical Drawings

Vertical Wall



Technical Drawings

Vertical Wall





catnic.com

Care has been taken to ensure that the contents of this publication are accurate, but Tata Steel Europe Limited and its subsidiaries, which includes Tata Steel UK Limited, do not accept responsibility or liability for errors or information that is found to be misleading. Suggestions for, or descriptions of, the end use or application of products or methods of working are for information only and Tata Steel Europe Limited and its subsidiaries accept no liability in respect thereof.

Before using products or services supplied or manufactured by Tata Steel Europe Limited and its subsidiaries, customers should satisfy themselves as to their suitability.

Catnic reserves the right to change information contained within this brochure at any time.

© Copyright 2025 Tata Steel UK Limited

Catnic
Pontypandy Industrial Estate
Caerphilly
CF83 3GL

English version 05/25